

WAAS
CH **72918**
W35A

APP CRS
350°

Rwy Idg
TDZE **3278**
Apt Elev **3315**

RNAV (GPS) RWY 35

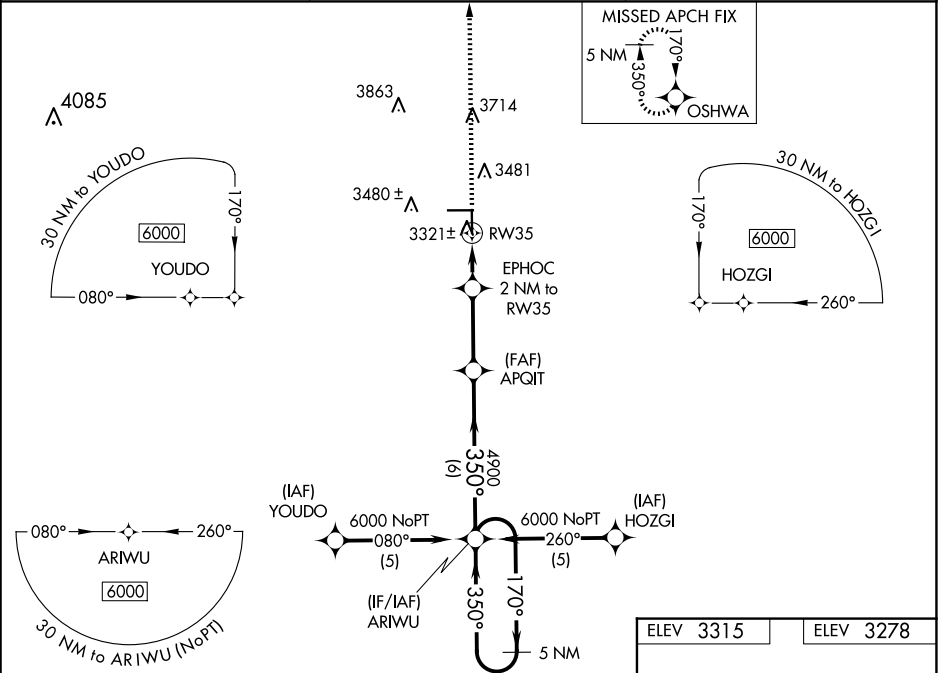
GAINES COUNTY (GNC)

▼ For uncompensated Baro-VNAV systems, LNAV/VNAV NA below -21°C (-5°F) or above 54°C (130°F).

▲ DME/DME RNP-0.3 NA. When local altimeter setting not received, use Midland Intl Air and Space Port altimeter setting and increase LPV DA to 3704 feet and all visibilities ½ SM; increase LNAV/VNAV DA to 3767 feet and all visibilities ¾ SM; increase all MDAs 180 feet and visibility LNAV and Circling Cat C ½ SM. Baro-VNAV and VDP NA when using Midland Intl Air and Space Port altimeter setting.

MISSED APPROACH: Climb to 6000 direct OSHWA and hold, continue climb-in-hold to 6000.

AWOS-3 118.075	FORT WORTH CENTER 132.6 269.05	UNICOM 122.8 (CTAF) 0
--------------------------	--	--



6000

↑

OSHOWA

✦

VGSI and RNAV glidepath not coincident (VGSI Angle 3.00/TCH 37).

* LNAV only.

APQIT

4900

ARIWU

5 NM Holding Pattern

170° →

← 350°

6000

GP 3.00° TCH 40

EPHOC 2 NM to RW35

* 0.9 NM to RW35

RW35

3940*

350°

4900

0.9

1.1

2.9 NM

6 NM

CATEGORY	A		B		C	D
LPV DA	3528-1		250 (300-1)			NA
LNAV/VNAV DA	3591-1¼		313 (300-1¼)			NA
LNAV MDA	3580-1		302 (300-1)			NA
CIRCLING	3840-1 525 (600-1)	3880-1 565 (600-1)	3940-1¾ 625 (700-1¾)			NA

MIRL Rwy 8-26 and 17-35

0

∞

⊖

→ 0.6% UP

Z1

✦

5381 X 75

⊖

5002 X 75

⊖

→ 0.4% UP

35

350° to RW35