

WAAS CH 99343 W17A	APP CRS 167°	Rwy Idg 5000 TDZE 2991 Apt Elev 2991
--	------------------------	---

RNAV (GPS) RWY 17

ATWOOD-RAWLINS COUNTY CITY-COUNTY (ADT)

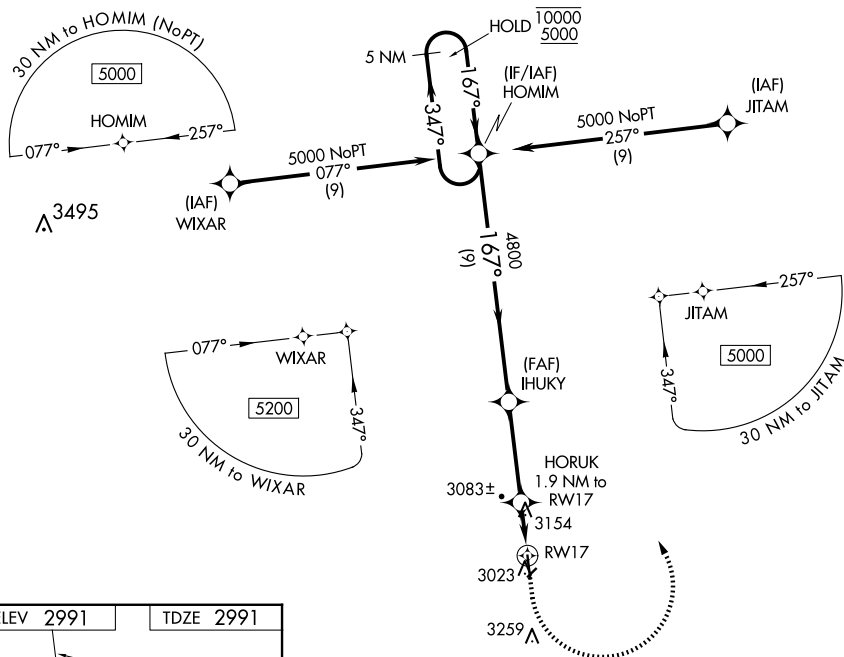
RNP APCH.

T
A NA

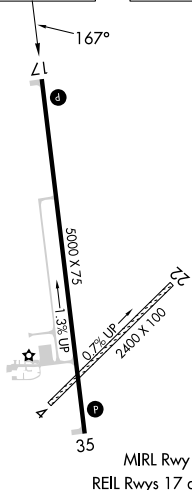
Circling NA to Rwy 4 and 22. Circling Rwy 35 NA at night. Baro-VNAV and VDP NA when using Colby altimeter setting. Rwy 17 helicopter visibility reduction below $\frac{3}{4}$ SM NA. For uncompensated Baro-VNAV systems, LNAV/VNAV NA below -20°C or above 54°C. When local altimeter setting not received, use Colby altimeter setting: increase all DAs to 3326 feet; increase all MDAs 100 feet and visibility Cots C and D $\frac{1}{4}$ mile.

MISSED APPROACH:
Climb to 3500 then climbing
left turn to 5000 direct
HOMIM and hold.

AWOS-3 118.675	DENVER CENTER 132.7 226.675	UNICOM 122.7 (CTAF) 0
--------------------------	---------------------------------------	---------------------------------



ELEV 2991	TDZE 2991
-----------	-----------



5 NM Holding Pattern

HOMIM

IHUKY

HORUK
1.9 NM to RW17

RW17

*LNAV only

GP 3.00°
TCH 41

Distances:
9 NM
3.6 NM
0.7 NM
1.2 NM

Altitudes:
10000
5000
4800
*3640

Angles:
←347°
→167°
←167°
→167°

RNAV (GPS) RWY 17