

APP CRS
326°

Rwy Idg
TDZE
390

Apt Elev
391

RNAV (GPS) RWY 33

CALDWELL MUNI (RWV)

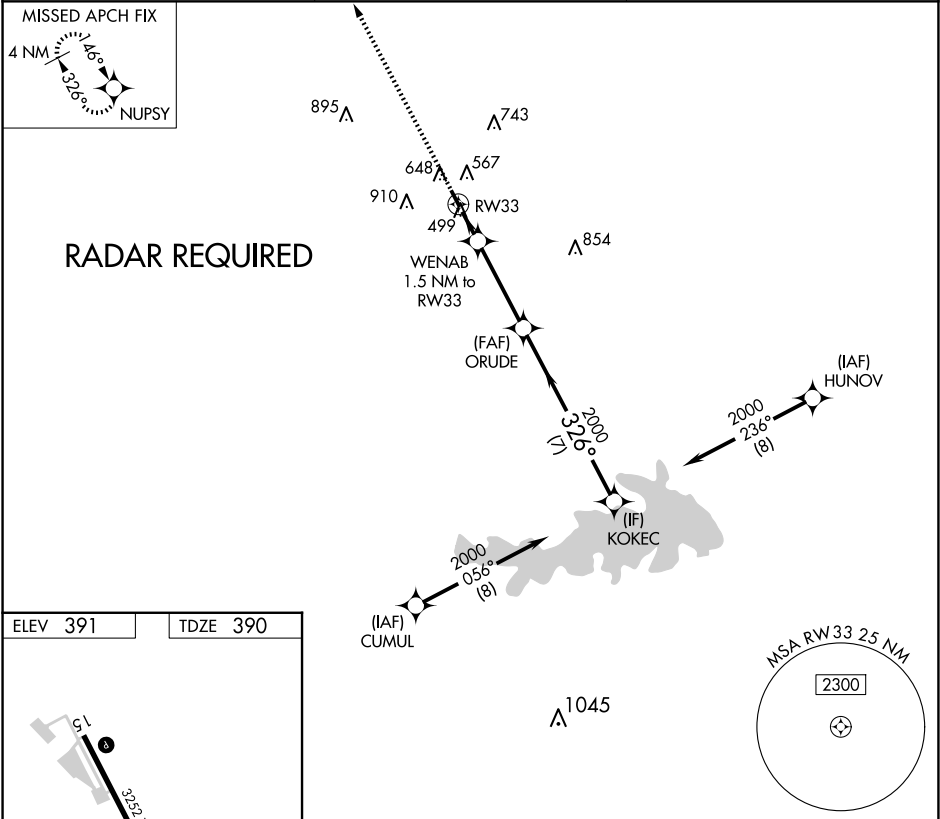
⚠

When local altimeter setting not received, use College Station altimeter setting and increase all MDA 60 feet. Circling NA east of Rwy 15-33. DME/DME RNP-0.3 NA. Procedure NA at night. Rwy 33 helicopter visibility reduction below 1 SM NA.

MISSED APPROACH:

Climb to 2500 direct NUPSY and hold.

| | | |
|--------------------|---------------------------------|---------------|
| AWOS-3PT 118.35 | HOUSTON APP CON 134.3 360.85 | CTAF 122.9 |
|--------------------|---------------------------------|---------------|



ELEV 391

TDZE 390

51

3232-X-50

0.9% UP 0.3

326°

MIRL Rwy 15-33

2500

NUPSY

WENAB 1.5 NM to RW33

ORUDE

KOKEC

RW33

920

3.24°

TCH 40

1.5 NM

3.5 NM

7 NM

326°

2000

2000

| | | | | |
|----------|-----------------------|-------------------------|----|---|
| CATEGORY | A | B | C | D |
| LNAV MDA | 760-1 | 370 (400-1) | NA | |
| CIRCLING | 1000-1 609 (700-1) | 1220-1¼ 829 (900-1¼) | NA | |

SC-5, 10 JUL 2025 to 07 AUG 2025

SC-5, 10 JUL 2025 to 07 AUG 2025