

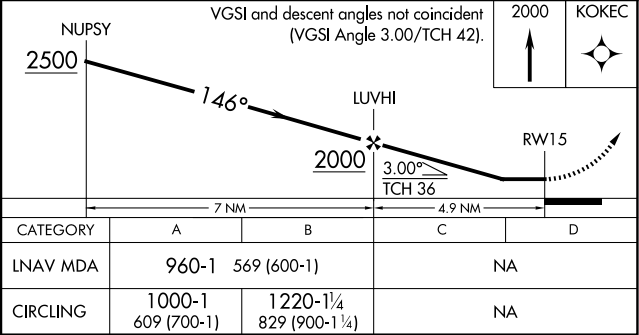
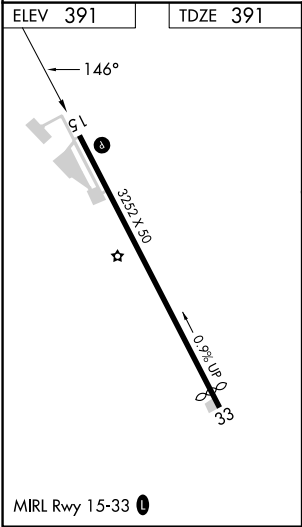
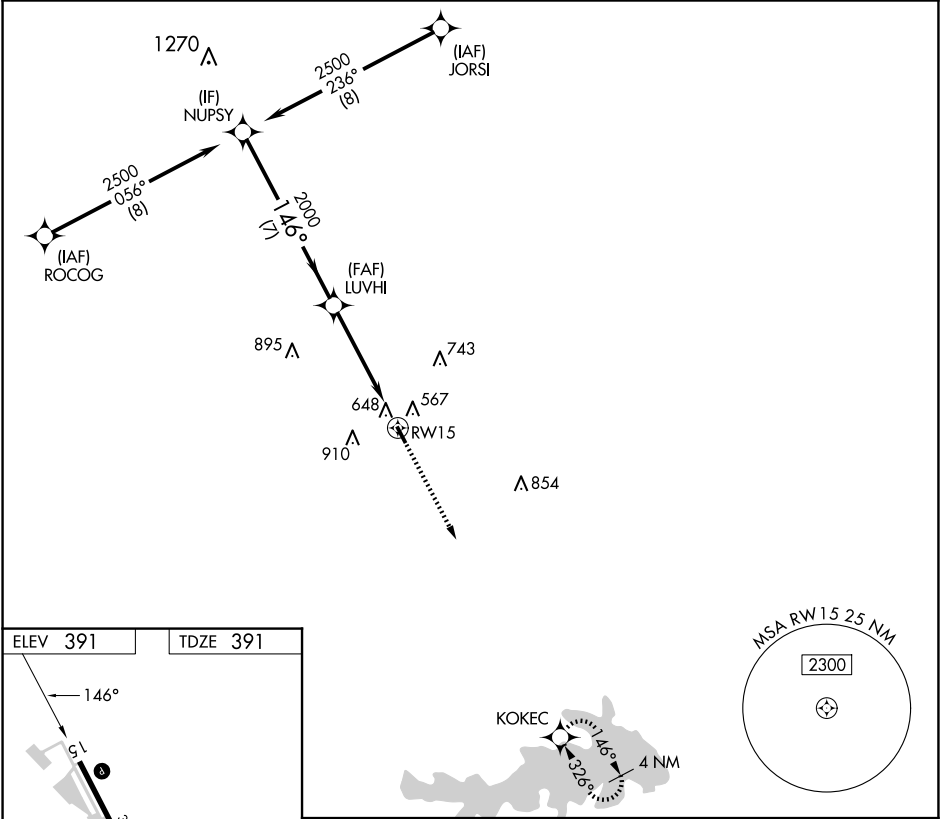
|         |          |      |
|---------|----------|------|
| APP CRS | Rwy Idg  | 3252 |
| 146°    | TDZE     | 391  |
|         | Apt Elev | 391  |

RNAV (GPS) RWY 15

CALDWELL MUNI (RWV)

|  |   |
|--|---|
| RNP APCH - GPS.  | MISSED APPROACH: Climb to 2000 direct KOKEC and hold. |
| RADAR required.  |   |
| When local altimeter setting not received, use College Station altimeter setting and increase all MDA 60 feet. Circling NA east of Rwy 15-33. Procedure NA at night. Rwy 15 helicopter visibility reduction below 1 SM NA. |   |

|                    |                                 |               |
|--------------------|---------------------------------|---------------|
| AWOS-3PT<br>118.35 | HOUSTON APP CON<br>134.3 360.85 | CTAF<br>122.9 |
|--------------------|---------------------------------|---------------|



SC-5, 10 JUL 2025 to 07 AUG 2025

SC-5, 10 JUL 2025 to 07 AUG 2025