

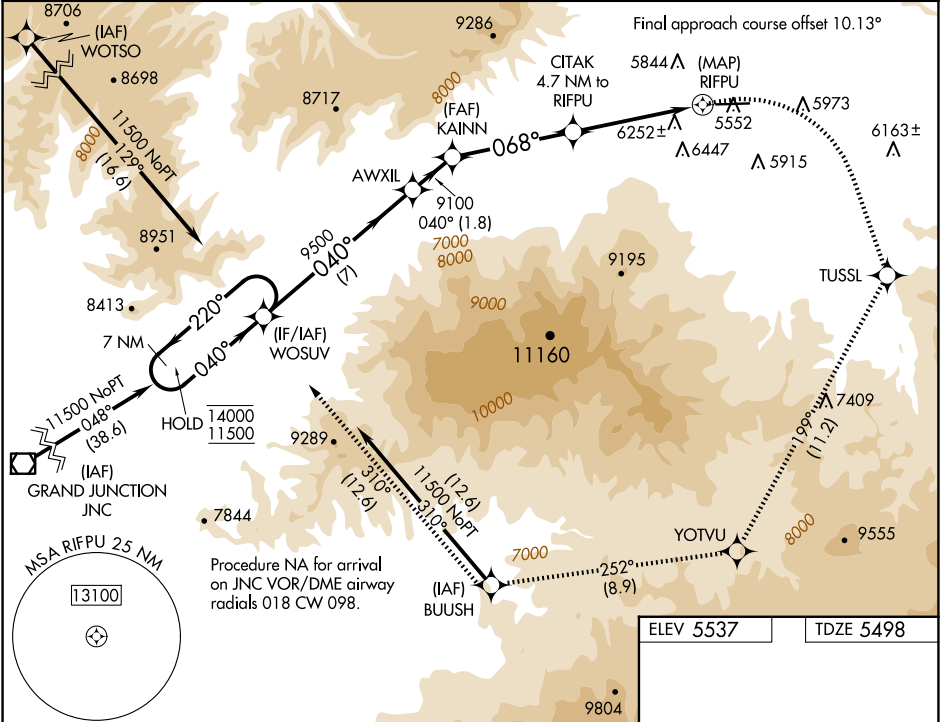
APP CRS	Rwy Ldg	7000
068°	TDZE	5498
	Apt Elev	5537

RNAV (GPS) Y RWY 8

RIFLE GARFIELD COUNTY (RIL)

RNP APCH - GPS.	MISSED APPROACH: Climbing right turn to 14000 direct TUSSL and on track 199° to YOTVU and on track 252° to BUUSH and on track 310° to WOSUV and hold, continue climb-in-hold to 14000.
Circling NA south of Rwy 8-26 at night.	
-13°C	

ASOS 135.275	DENVER CENTER 134.95 327.075	UNICOM 122.8 (CTAF)
-----------------	---------------------------------	------------------------



7 NM Holding Pattern	14000	TUSSL	tr 199°	YOTVU	tr 252°	BUUSH	tr 310°	WOSUV
	14000 11500	WOSUV	AWXIL	KAINN	CITAK	RIFPU		
<p>VGSI and descent angles not coincident (VGSI Angle 3.00/TCH 47).</p> <p>220° 040° 040° 9500 9100 3.50° TCH 47 4.7 NM to RIFPU 068° 7460 0.5</p> <p>7 NM 1.8 NM 4.4 NM 4.7 NM 0.5</p>								
CATEGORY	A	B	C	D				
LNAV MDA	7420-1¼ 1922 (1900-1¼)	7420-1½ 1922 (1900-1½)	7420-3 1922 (1900-3)	8100-3 2563 (2600-3)				
CIRCLING	7420-1¼ 1883 (1900-1¼)	7420-1½ 1883 (1900-1½)	7420-3 1883 (1900-3)	8100-3 2563 (2600-3)				

ELEV 5537 TDZE 5498

HIRL Rwy 8-26
REIL Rwy 8