

APP CRS	Rwy Ldg	7000
259°	TDZE	5537
	Apt Elev	5537

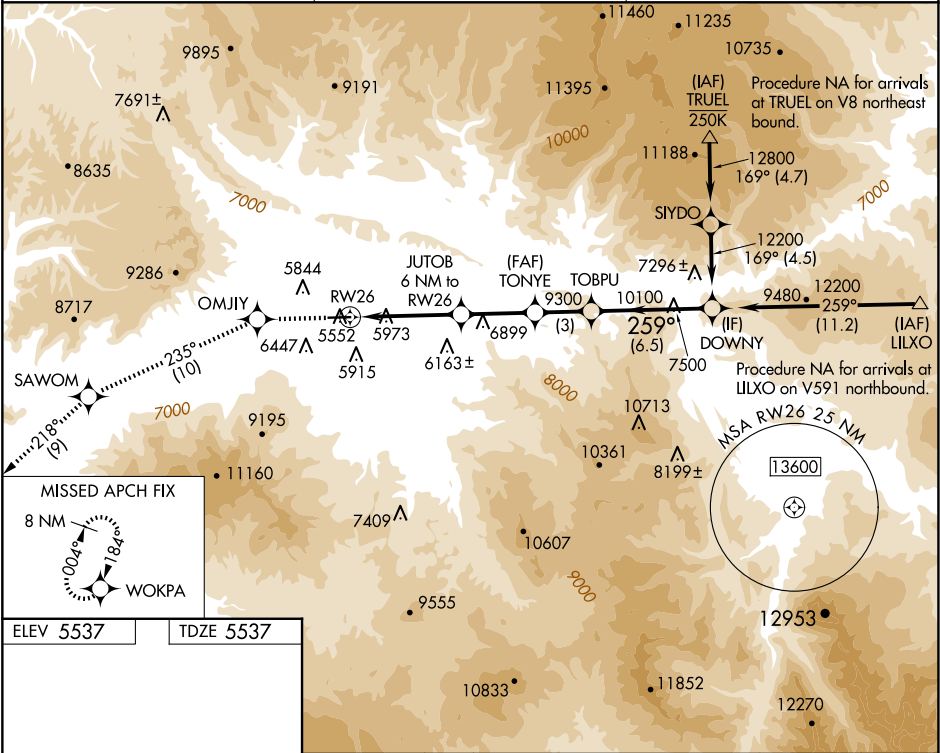
# RNAV (GPS) W RWY 26

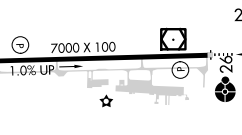
RIFLE GARFIELD COUNTY(R.I.L.)

RNP APCH - GPS.	
	Rwy 26 helicopter visibility reduction below 3/4 SM NA.
	Inop table does not apply. Circling NA south of
	Rwy 8-26 at night.

ODALS	MISSED APPROACH: Climb to 14000 direct OMJIY and on track 235° to SAWOM and on track 218° to WOKPA and hold, continue climb-in-hold to 14000.
-------	---

ASOS 135.275	DENVER CENTER 134.95 327.075	UNICOM 122.8 (CTAF) 1
-----------------	---------------------------------	--------------------------



	
HIRL Rwy 8-26	1
REIL Rwy 8	1

14000	OMJIY	fr 235°	SAWOM	fr 218°	WOKPA	DOWNY
CATEGORY		A	B	C	D	
LNAV MDA		7220-1 1/4 1683 (1700-1 1/4)	7220-1 1/2 1683 (1700-1 1/2)	7220-3	1683 (1700-3)	
CIRCLING		7220-1 1/4 1683 (1700-1 1/4)	7220-1 1/2 1683 (1700-1 1/2)	7220-3	8100-3 2563 (2600-3)	