

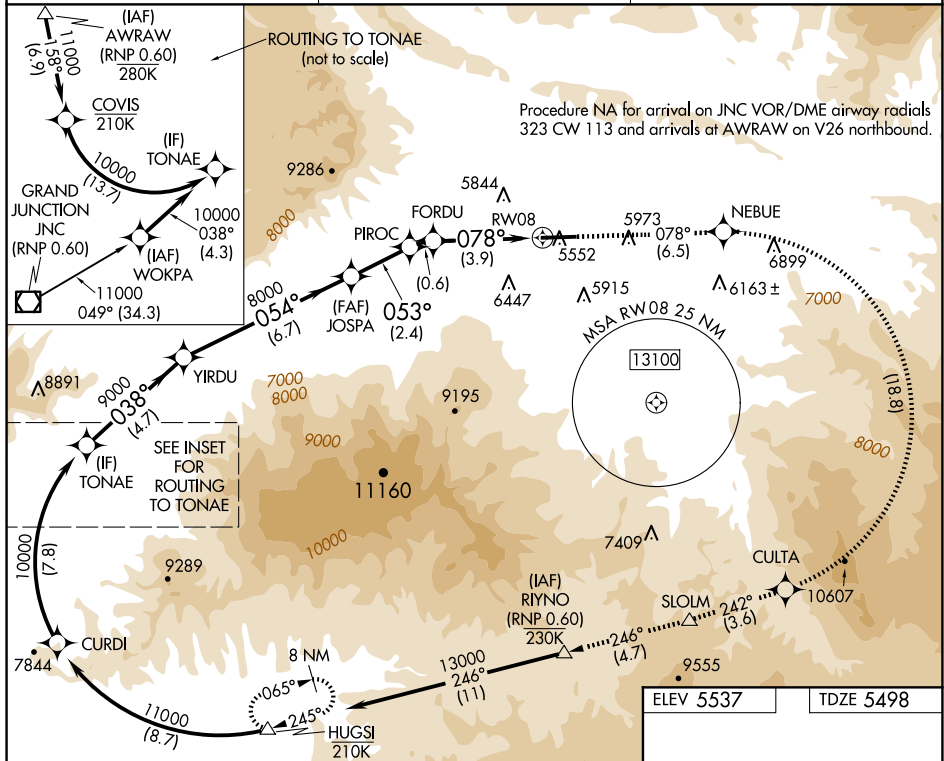


APP CRS 078°	Rwy Ldg TDZE Apt Elev	7000 5498 5537
------------------------	-----------------------------	---

RNAV (RNP) Z RWY 8
RIFLE GARFIELD COUNTY (RIL)

  -13°C	RF and GPS required. Procedure NA for wingspans greater than 136 feet. For uncompensated Baro-VNAV systems, procedure NA below -24°C (-11°F) or above 54°C (130°F). *Missed approach requires minimum climb of 425 feet per NM to 11300. **Missed approach requires minimum climb of 425 feet per NM to 10000; if unable, see RNAV (GPS) Y RWWY 8.	MISSED APPROACH: Climb to 13000 on track 078° to NEBUE, right turn to CULTA, and track 242° to SLOLM and track 246° to RYNO and track 246° to HUGSI and hold.
--	--	---

ASOS 135.275	DENVER CENTER 134.95 327.075	UNICOM 122.8 (CTAF) 0
------------------------	--	---------------------------------



<p>TONAE</p> <p>10000</p> <p>GP 3.20° TCH 51</p>		<p>YIRDU</p> <p>9000</p>		<p>JOSPA</p> <p>8000</p>		<p>PIROC</p> <p>7178</p>		<p>FORDU</p> <p>6870</p>		<p>RW08</p>	
<p>038°</p>		<p>054°</p>		<p>053°</p>		<p>078°</p>		<p>078°</p>		<p>078°</p>	
<p>4.7 NM</p>		<p>6.7 NM</p>		<p>2.4 NM</p>		<p>0.6 NM</p>		<p>3.9 NM</p>		<p></p>	
<p>CATEGORY</p>		<p>A</p>		<p>B</p>		<p>C</p>		<p>D</p>		<p></p>	
<p>RNP 0.10 DA*</p>		<p>5748-1</p>		<p>250 (300-1)</p>		<p></p>		<p></p>		<p>NA</p>	
<p>RNP 0.30 DA**</p>		<p>6391-3</p>		<p>893 (900-3)</p>		<p></p>		<p></p>		<p>NA</p>	

ELEV 5537

TDZE 5498

078°

7000 X 100

1.0% UP

26

HIRL Rwy 8-26

REIL Rwy 8

SW-1, 10 JUL 2025 to 07 AUG 2025

SW-1 10.JUL 2025 to 07 AUG 2025