

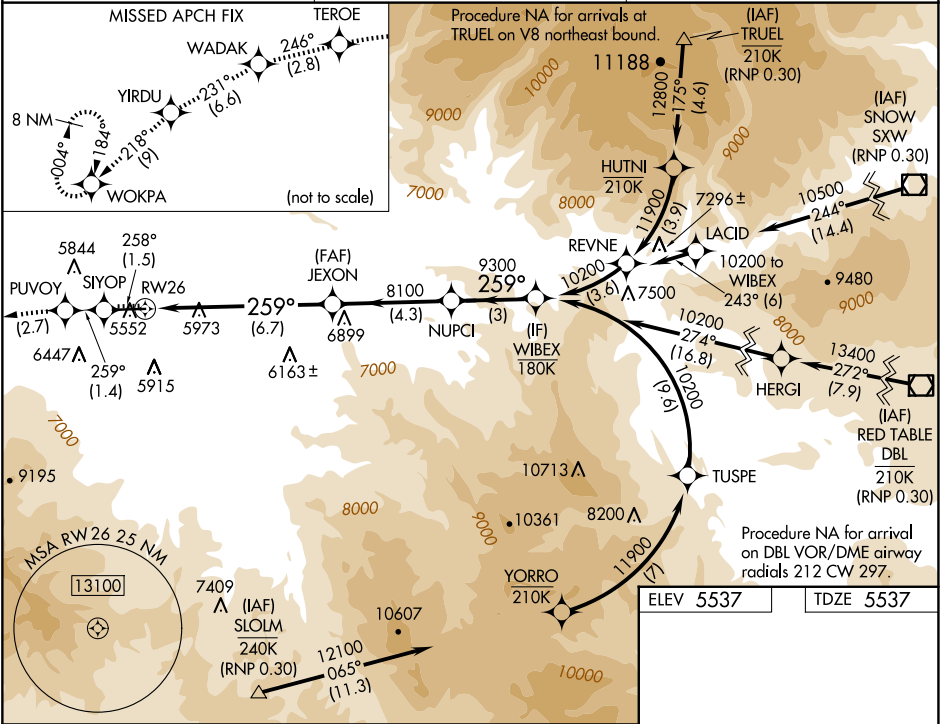
APP CRS	Rwy Ldg	7000
259°	TDZE	5537
	Apt Elev	5537

RNAV (RNP) Z RWY 26

RIFLE GARFIELD COUNTY (RIL)

RNP AR APCH - GPS, RF, min RNP 0.30. Authorization required. Missed approach requires RNP <1.00.		ODALS 	MISSED APPROACH: Climb to 14000 on track 258° to SIYOP and on track 259° to PUVOY left turn to TEROE and on track 246° to WADAK and on track 231° to YIRDU and on track 218° to WOKPA and hold, continue climb-in-hold to 14000. *Missed approach requires minimum climb of 415 feet per NM to 6800.
	For uncompensated Baro-VNAV systems, procedure NA below -21°C or above 35°C. When VGSI inop, procedure NA at night. Inop table does not apply to RNP 0.30. For inop ALS, increase RNP 0.10 Cats A and B visibility to 1 3/8 SM.		

ASOS 135.275	DENVER CENTER 134.95 327.075	UNICOM 122.8 (CTAF)
-----------------	---------------------------------	------------------------



14000 tr 258°	SIYOP tr 259°	PUVOY	WIBEX
CATEGORY			
RNP 0.10 DA*			
RNP 0.30 DA			
AUTHORIZATION REQUIRED			
HIRL Rwy 8-26 REIL Rwy 8			