

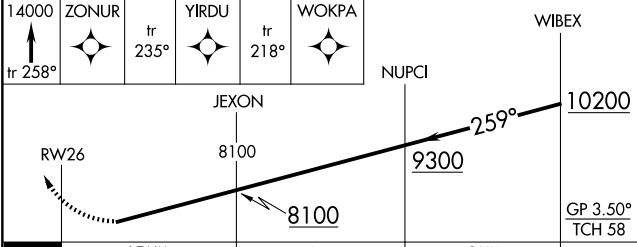
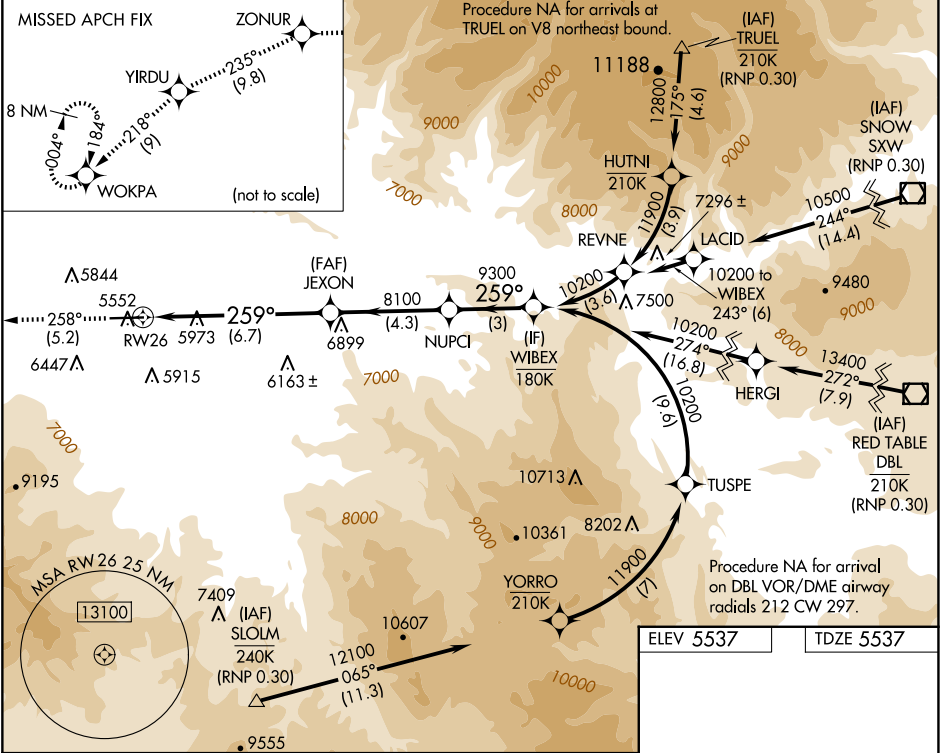
APP CRS	Rwy Ldg	7000
259°	TDZE	5537
	Apt Elev	5537

RNAV (RNP) Y RWY 26

RIFLE GARFIELD COUNTY (RIL)

RNP AR APCH - GPS. Authorization required. From TRUEL or SLOLM: RF.	ODALS	MISSED APPROACH: Climb to 14000 on track 258° to ZONUR and on track 235° to YIRDU and on track 218° to WOKPA and hold, continue climb-in-hold to 14000.
<div><div>▼</div><div>▲</div><div>⊞</div></div> <div>For uncompensated Baro-VNAV systems, procedure NA below -21°C or above 35°C. Inop table does not apply. When VGSi inop, procedure NA at night.</div>	<div>⬆</div> <div>⬆</div>	

ASOS 135,275	DENVER CENTER 134.95 327.075	UNICOM 122.8 (CTAF) ①
-----------------	---------------------------------	--------------------------



CATEGORY	A	B	C	D
RNP 0.30 DA	6395-2½	858 (900-2½)		

AUTHORIZATION REQUIRED

ELEV 5537 TDZE 5537

GP 3.50°

TCH 58

HIRL Rwy 8-26 ①

REIL Rwys 8 ①