




25163

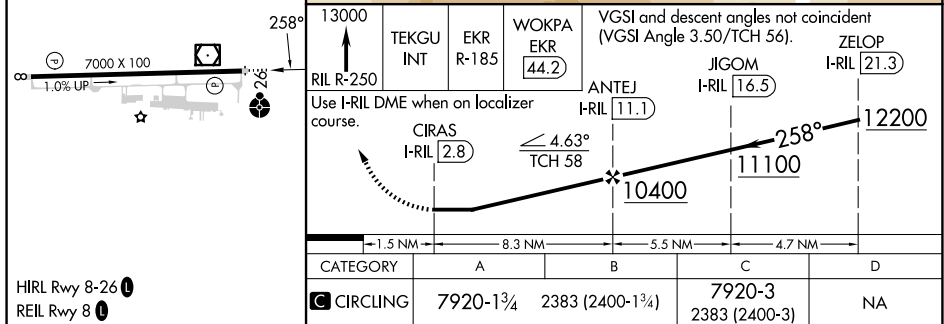
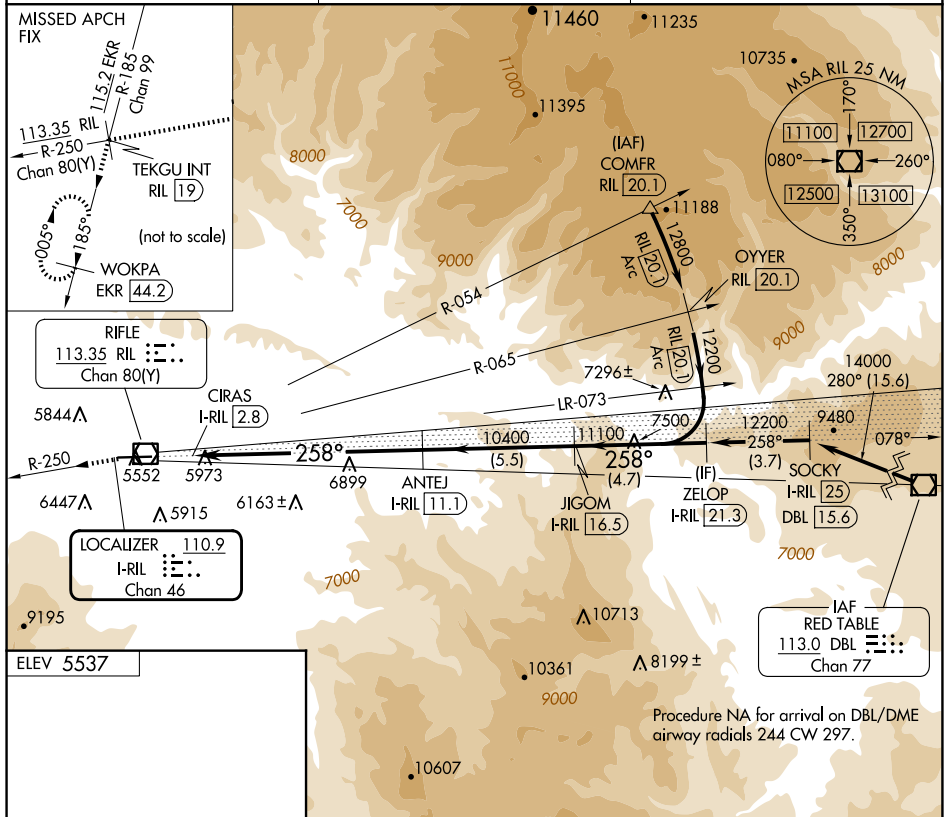
LOC-A
RIFLE GARFIELD COUNTY (RTL)



 -13°C

Circling NA south of Rwy 8-26 at night. Rwy 26
 helicopter visibility reduction below $\frac{3}{4}$ SM NA.

MISSED APPROACH: Climb to 13000 on RIL VOR/DME R-250 to TEKGU INT/RIL 19 DME and on EKR VOR/DME R-185 to WOKPA/EKR 44.2 DME and hold.

ASOS 135.275	DENVER CENTER 134.95 327.075	UNICOM 122.8 (CTAF) 0
------------------------	--	--



RIFLE GARFIELD COUNTY (RIL)
LOC-A

SW-1, 10 JUL 2025 to 07 AUG 2025