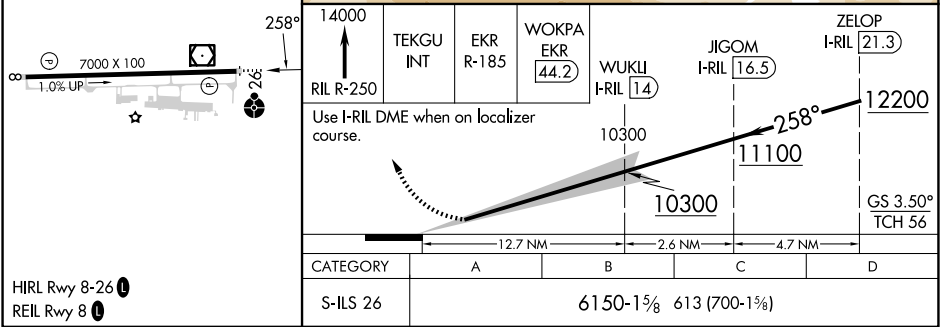
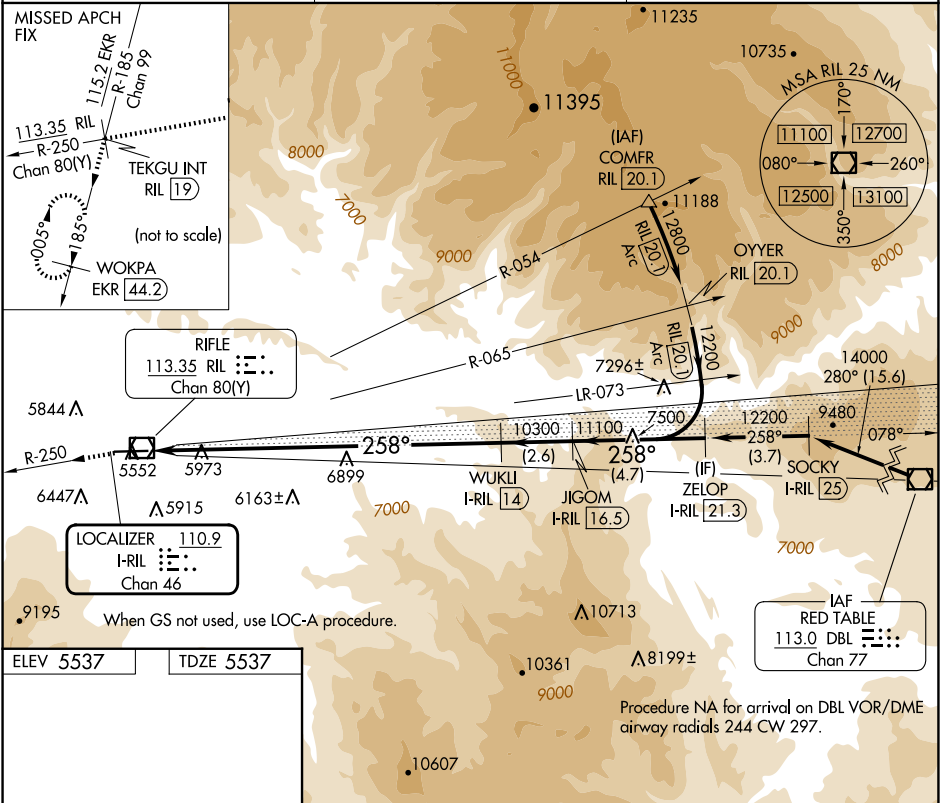


LOC/DME I-RIL 110.9 Chan 46	APP CRS 258°	Rwy Ldg TDZE Apt Elev 7000 5537 5537
---	------------------------	--

ILS RWY 26
RIFLE GARFIELD COUNTY (RIL)

DME required. ▽ ▲ ❄ -13°C	ODALS ⬢	MISSED APPROACH: Climb to 14000 on RIL VOR/DME R-250 to TEKGU INT/RIL 19 DME and on EKR VOR/DME R-185 to WOKPA/EKR 44.2 DME and hold. Missed approach requires minimum climb of 420 feet per NM to 9600; if unable to meet climb gradient, see LOC-A.
------------------------------------	------------	---

ASOS 135.275	DENVER CENTER 134.95 327.075	UNICOM 122.8 (CTAF) 0
------------------------	--	---------------------------------



SW-1, 10 JUL 2025 to 07 AUG 2025

SW-1, 10 JUL 2025 to 07 AUG 2025