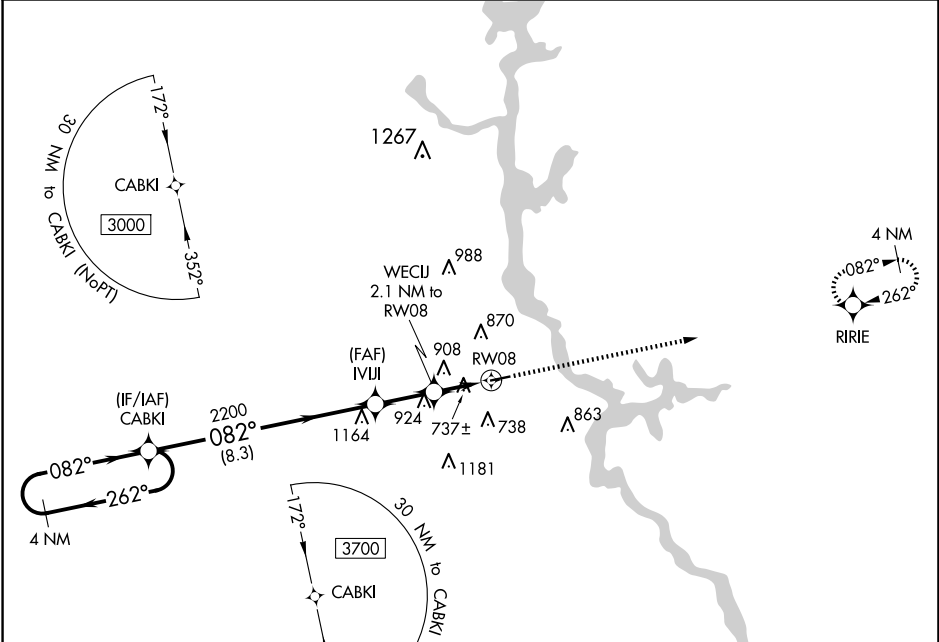


WAAS CH 86739 W08A	APP CRS 082°	Rwy Idg TDZE 585 Apt Elev 585
--	------------------------	---

RNAV (GPS) RWY 8
CHILTON COUNTY (02A)

<div><div>▼</div><div>▲ NA</div></div> <div>DME/DME RNP-0.3 NA. Helicopter visibility reduction below 1 SM NA. Use Shelby County altimeter setting; when not received, use Merkel Field Sylacauga Muni altimeter setting and increase all MDA 20 feet and LNAV visibility Cat C/D ½ mile. Procedure NA at night.</div>	MISSED APPROACH: Climb to 3300 direct RIRIE and hold.
--	---

EET ASOS-3 134.325	MONTGOMERY APP CON ★ 121.2 269.05	UNICOM 122.8 (CTAF) 0
------------------------------	---	---------------------------------



Visual Segment - Obstacles.		3300	RIRIE
4 NM Holding Pattern CABKI		↑	✦
3000 ← 262° → 082° → 082° → 2200		WECU 2.1 NM to RW08	
2200		RW08	
8.3 NM		2.1 NM	
1400		082° to RW08	
CATEGORY	A	B	C
LP MDA	1040-1	455 (500-1)	1040-1 3/8 455 (500-1 3/8)
LNAV MDA	1220-1	635 (700-1)	1220-1 3/4 635 (700-1 3/4)
CIRCLING	1260-1	675 (700-1)	1280-2 695 (700-2)
			1600-3 1015 (1100-3)

SE-4, 10 JUL 2025 to 07 AUG 2025

SE-4, 10 JUL 2025 to 07 AUG 2025