

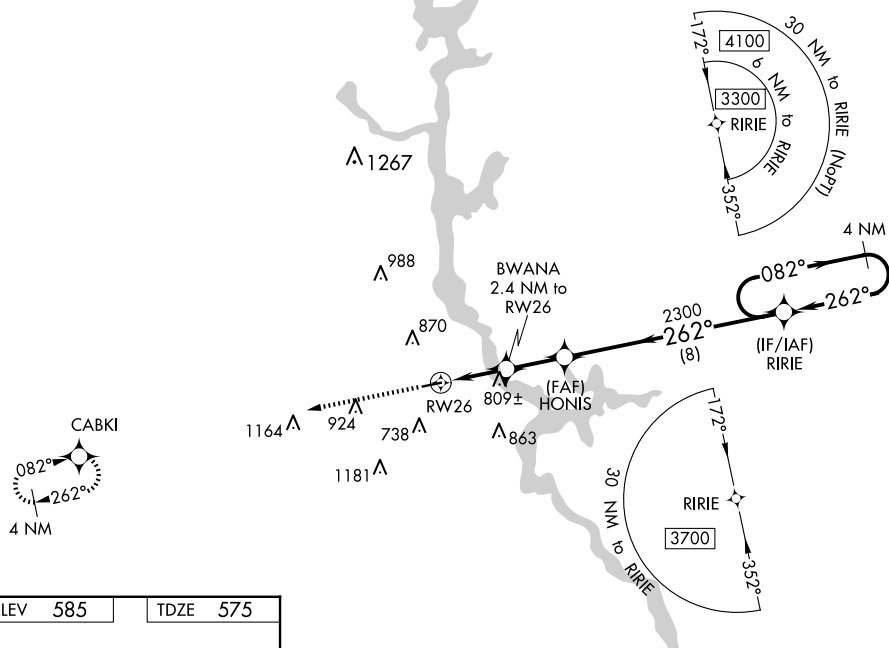
RNAV (GPS) RWY 26
CHILTON COUNTY (Ø2A)



DME/DME RNP-0.3 NA. Procedure NA at night. Use Shelby County altimeter setting; when not received, use Merkel Field Sylacauga Muni altimeter setting and increase all MDA 20 feet and LP visibility Cat C/D $\frac{1}{8}$ mile. Helicopter visibility reduction below 1 SM NA.

MISSED APPROACH: Climb to 3000 direct CABKI and hold.

MONTGOMERY APP CON ★
121.2 269.05

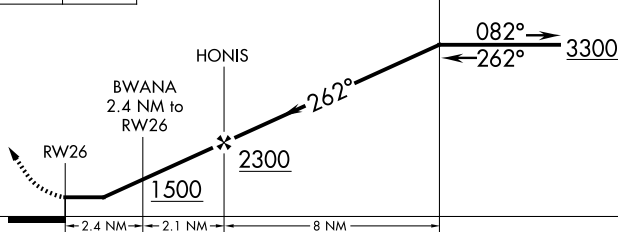
UNICOM
122.8 (CTAF) **L**




3000	CABKI
	

Visual Segment - Obstacles

RIRIE 4 NM Holding Pattern



CATEGORY	A	B	C	D
LP MDA	1100-1	525 (600-1)	1100-1½	525 (600-1½)
LNAV MDA	1120-1	545 (600-1)	1120-1⅝	545 (600-1⅝)
 CIRCLING	1260-1	675 (800-1)	1280-2 695 (700-2)	1600-3 1015 (1100-3)