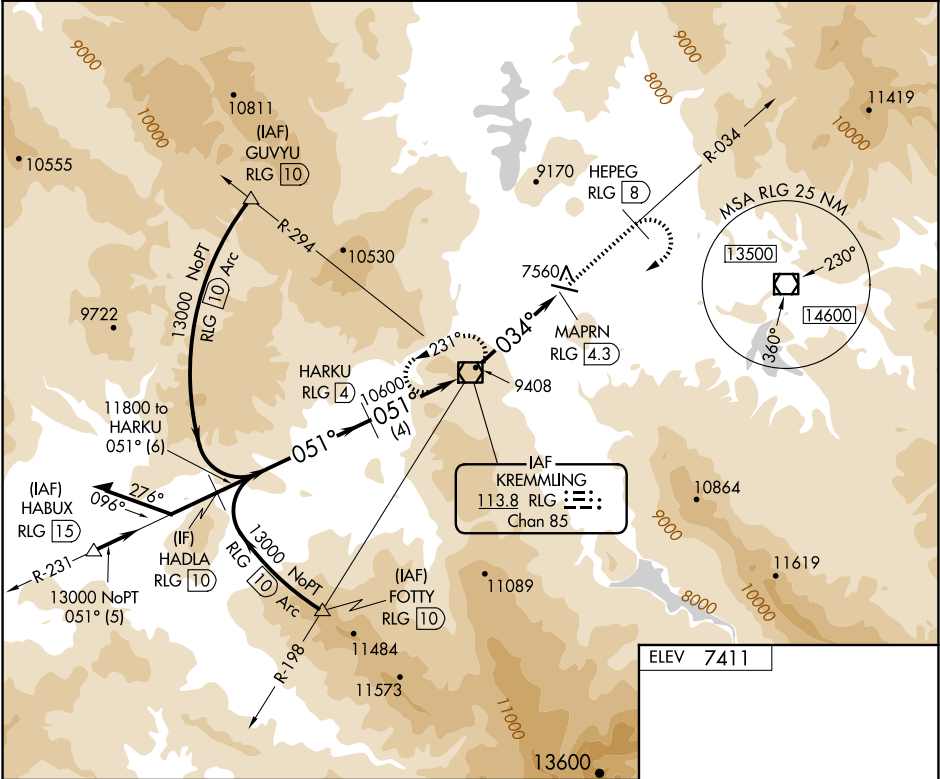


VOR/DME RLG	APP CRS	Rwy Ldg TDZE	N/A
113.8	034°		N/A
Chan 85		Apt Elev	7411

VOR/DME-A  
MC ELROY AIRFIELD (20V)

<p><b>T</b></p> <p><b>A</b></p> <p><b>W</b> -18°C</p>	<p>When local altimeter setting not received, procedure NA. Night Landing Rwy 9 NA. Circling NA south of Rwy 9-27.</p>	<p>MISSED APPROACH: Climb to 13200 on RLG VOR/DME R-034 to HEPEG/RLG VOR/DME 8 DME then climbing right turn direct RLG VOR/DME and hold, continue climb-in-hold to 13200.</p>
---	--	---

AWOS-3 118.425	DENVER CENTER 128.65 282.2	UNICOM 122.8 (CTAF) <b>U</b>
-------------------	-------------------------------	---------------------------------



<p>Remain within 15 NM</p> <p>13000 — 051° — 13000</p> <p>231°</p> <p>HADLA RLG 10</p> <p>HARKU RLG 4</p> <p>11800</p> <p>10600</p> <p>034°</p> <p>MAPRN RLG 4.3</p> <p>6 NM</p> <p>4 NM</p> <p>4.3 NM</p>				<p>13200</p> <p>RLG R-034</p> <p>HEPEG RLG 8</p> <p>RLG</p>	<p>13600</p>
CATEGORY	A	B	C	D	
<b>C</b> CIRCLING	9120-1¼ 1709 (1800-1¼)	9120-1½ 1709 (1800-1½)	9260-3 1849 (1900-3)	NA	

REIL Rws 9 and 27 **U**

MIRL Rwy 9-27 **U**