

WAAS CH <b>63040</b> <b>W27A</b>	APP CRS <b>275°</b>	Rwy Ldg TDZE <b>7415</b> Apt Elev <b>7415</b>
----------------------------------------	------------------------	-----------------------------------------------------------

RNAV (GPS) RWY 27

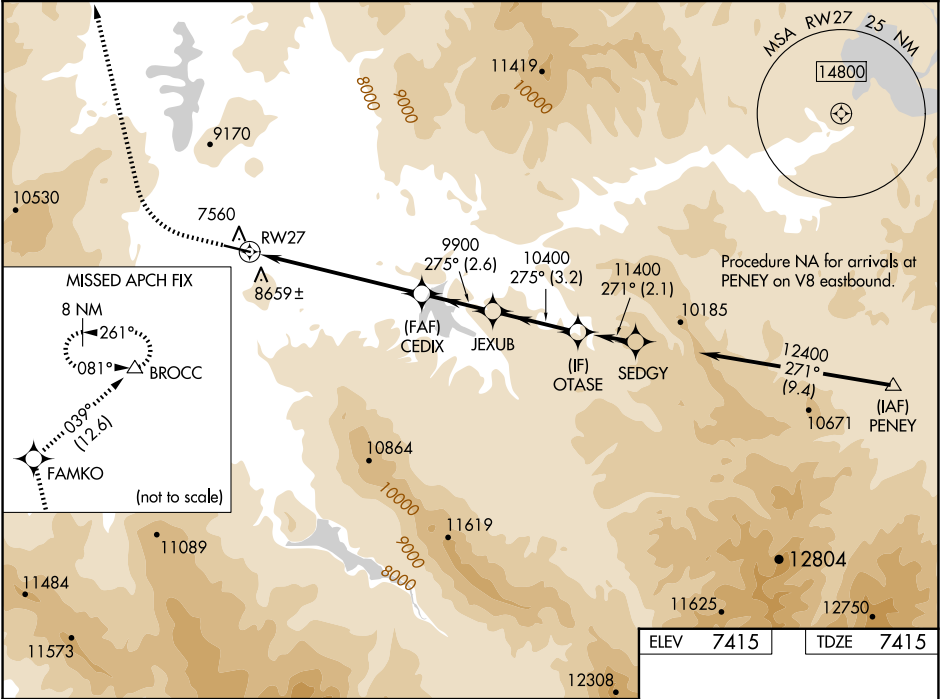
MC ELROY AIRFIELD (20V)

RNP APCH

Circling to Rwy 9 NA at night. Circling NA south of Rwy 9-27.  
 Rwy 27 helicopter visibility reduction below 3/4 SM NA.  
 For uncompensated Baro-VNAV systems, LNAV/VNAV NA below -29°C or above 48°C.

MISSED APPROACH: Climb to 9300 then climbing right turn to 13400 direct FAMKO and on track 039° to BROCC and hold. # Missed approach requires minimum climb of 405 feet per NM to 10000.

AWOS-3 <b>118.425</b>	DENVER CENTER <b>128.65 282.2</b>	UNICOM <b>122.8 (CTAF) 0</b>
--------------------------	--------------------------------------	---------------------------------



9300

13400

FAMKO

tr 039°

BROCC

VGSI and RNAV glidepath not coincident (VGSI Angle 3.00/TCH 44).

\*LNAV only

CEDIX

JEXUB

OTASE

RW27

CEDIX

JEXUB

OTASE

5.1 NM

1.3 NM

2.6 NM

3.2 NM

CATEGORY	A	B	C	D
LPV DA #	8245-2 1/2	830 (900-2 1/2)		NA
LPV DA	9021-6	1606 (1700-6)		NA
LNAV/VNAV DA	8819-5	1404 (1500-5)		NA
LNAV MDA	9100-1 1/4 1685 (1700-1 1/4)	9100-1 1/2 1685 (1700-1 1/2)	9100-3 1685 (1700-3)	NA
CIRCLING	9100-1 1/4 1685 (1700-1 1/4)	9100-1 1/2 1685 (1700-1 1/2)	9220-3 1805 (1900-3)	NA

ELEV 7415

TDZE 7415

GP 3.60°

TCH 49

0.3% UP

5540 X 75

275°

REIL Rwy 9 and 27 0

MIRL Rwy 9-27 0

SW-1, 10 JUL 2025 to 07 AUG 2025

SW-1, 10 JUL 2025 to 07 AUG 2025