

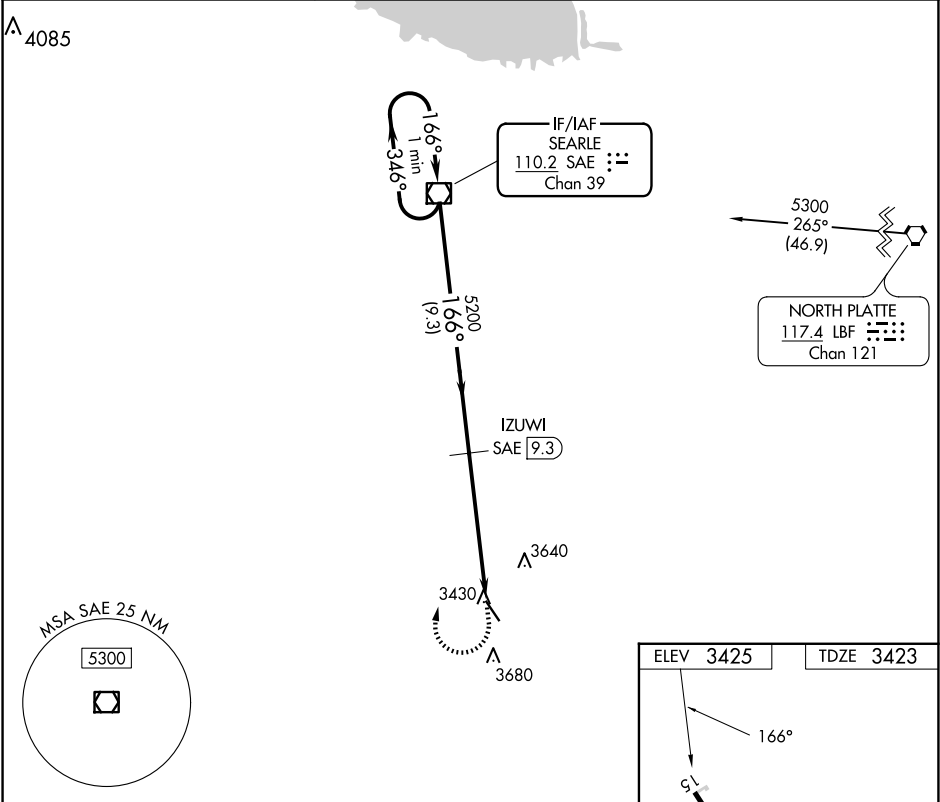
VOR/DME SAE	APP CRS	Rwy Idg	4797
110.2	166°	TDZE	3423
Chan 39		Apt Elev	3425

VOR/DME RWY 15
GRANT MUNI (GGF)

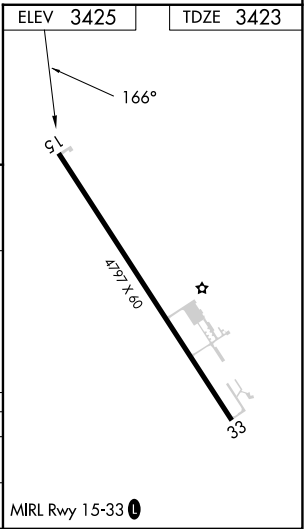
⚠ When local altimeter not received, use Ogallala altimeter setting and increase all MDA 60 feet. VDP NA with Ogallala altimeter setting.

MISSED APPROACH: Climb to 4000 then climbing right turn to 5300 direct SAE VOR/DME and hold.

AWOS-3PT 118.025	DENVER CENTER 132.7 397.85	UNICOM 122.8 (CTAF) 0
---------------------	-------------------------------	---------------------------------



One Minute Holding Pattern			SAE VOR/DME	4000 ↑	5300 ↗	SAE ◻
5300	← 346°	166° →	166°	IZUWI SAE 9.3	3.06° TCH 40	SAE 13.2 SAE 14.7
			5200	✕		
			9.3 NM	3.9 NM	1.5	
CATEGORY	A	B	C	D		
S-15	3940-1 517 (600-1)		NA			
CIRCLING	3940-1 515 (600-1)	3980-1 555 (600-1)	NA			



NC-2, 10 JUL 2025 to 07 AUG 2025

NC-2, 10 JUL 2025 to 07 AUG 2025