

APP CRS
338°

Rwy Idg
3939

TDZE
624

Apt Elev
633

RNAV (GPS) RWY 33

FRANKFORT DOW MEML FLD (F'KS)

▼

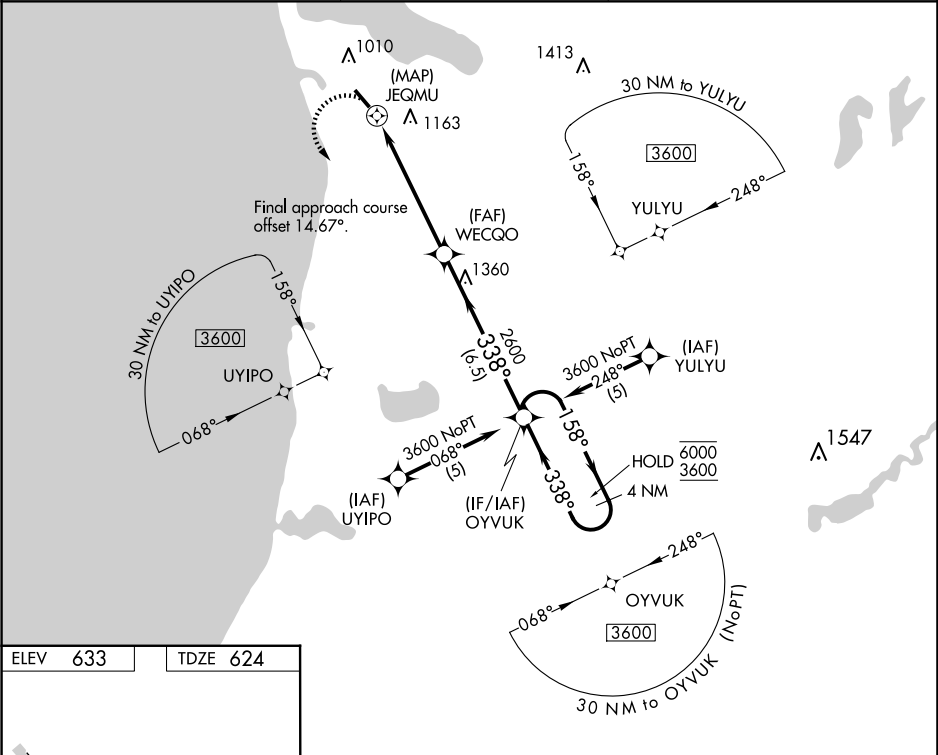
▲

RNP APCH - GPS.

Procedure NA at night. Rwy 33 helicopter visibility reduction below 1 SM NA.

MISSED APPROACH: Climbing left turn to 3600 direct OYVUK and hold.

AWOS-3P 118.325	MINNEAPOLIS CENTER 132.9 338.3	UNICOM 123.05 (CTAF) 0
---------------------------	--	----------------------------------



ELEV 633

TDZE 624

MIRL Rwy 15-33 0

REIL Rwy 33 0

3600	OYVUK	4 NM Holding Pattern			
CATEGORY	A	B	C	D	
LNAV MDA	1360-1	736 (800-1)	1360-2 736 (800-2)	NA	
CIRCLING	1400-1 767 (800-1)	1520-1¼ 887 (900-1¼)	1520-2¾ 887 (900-2¾)	NA	