

APP CRS  
355°

Rwy Idg  
TDZE  
Apt Elev

3007  
1085  
1092

RNAV (GPS) RWY 35  
MEDFORD MUNI (O53)

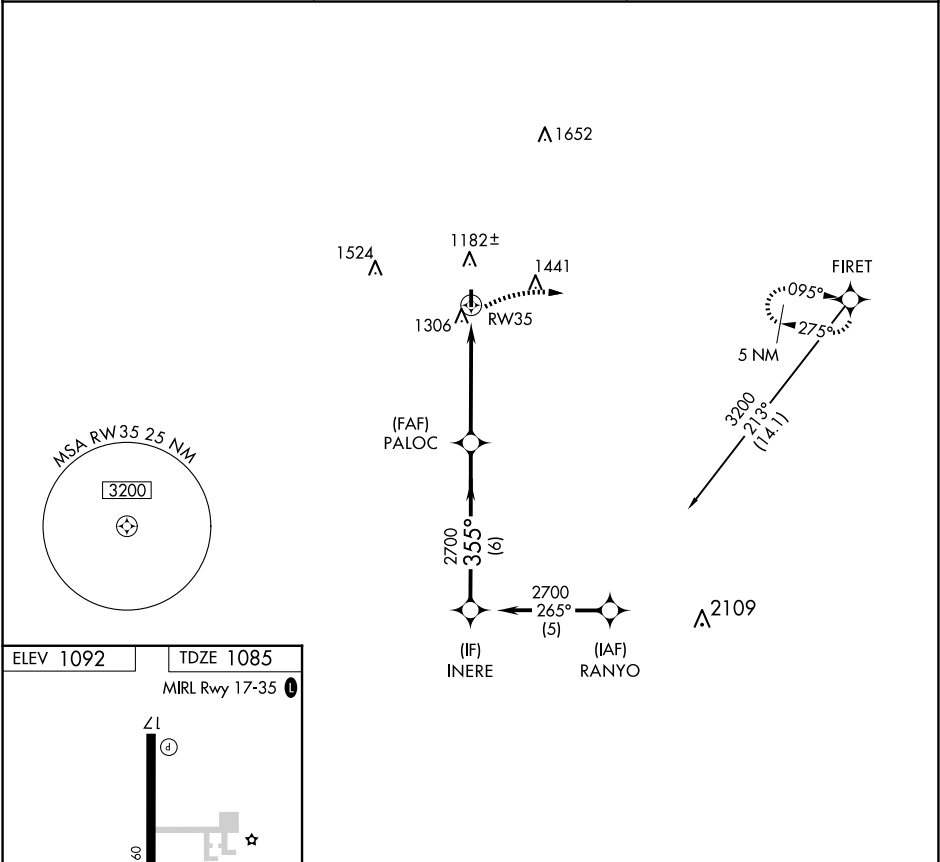
RNP APCH.

▲ NA

Use Ponca City Rgnl altimeter setting. Procedure NA at night.

MISSED APPROACH: Climbing right turn to 5000 direct FIRET and hold.

PNC ASOS 134.075	VANCE APP CON★ 118.075 273.475	UNICOM 122.8 (CTAF) 1
---------------------	-----------------------------------	--------------------------



ELEV 1092

TDZE 1085

MIRL Rwy 17-35 1

3007 X 60

35

355°

5000	FIRET	PALOC	INERE	Procedure Turn NA
RW35		2700	2700	
355°		3.00° TCH 40	VGSi and descent angles not coincident (VGSi Angle 3.51/TCH 33).	
4.9 NM		6 NM		
CATEGORY	A	B	C	D
LNAV MDA	1700-1¼	608 (700-1¼)	NA	
CIRCLING	1740-1¼ 648 (700-1¼)	1840-1¼ 748 (800-1¼)	NA	