

23334

WAAS CH <b>66032</b> <b>W01A</b>	APP CRS <b>010°</b>	Rwy Idg <b>4021</b> TDZE <b>3611</b> Apt Elev <b>3616</b>
--	------------------------	---

RNAV (GPS) RWY 1  
LITTLEFIELD TAYLOR BROWN MUNI (LIU)

**T**

**ANA**

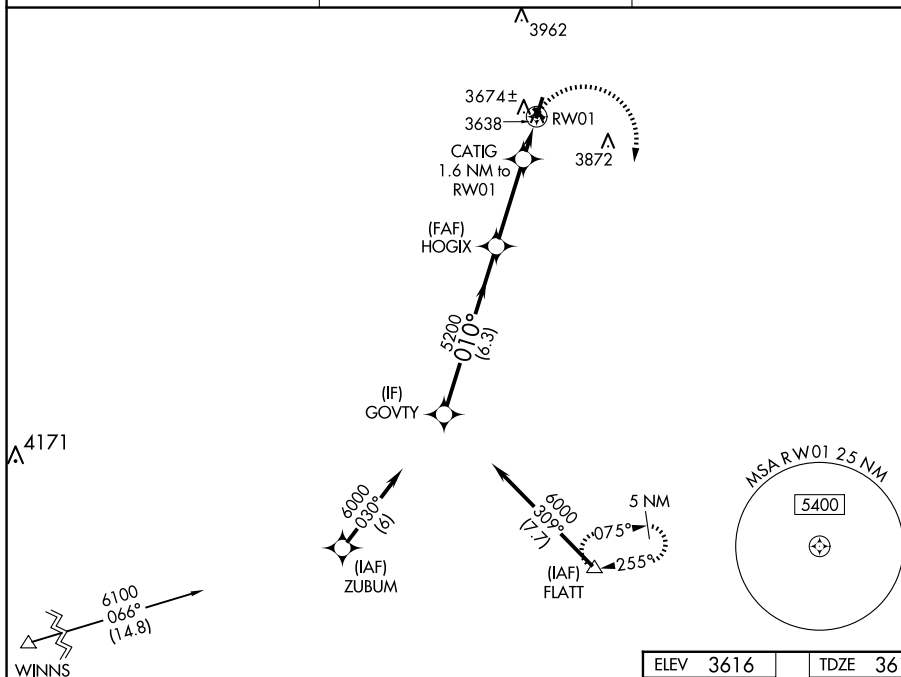
Baro-VNAV NA. Use Lubbock altimeter setting. DME/DME RNP-0.3 NA.  
Helicopter visibility reduction below  $\frac{3}{4}$  SM NA.

**MISSED APPROACH:** Climbing right turn to 6000 direct FLATT and hold.

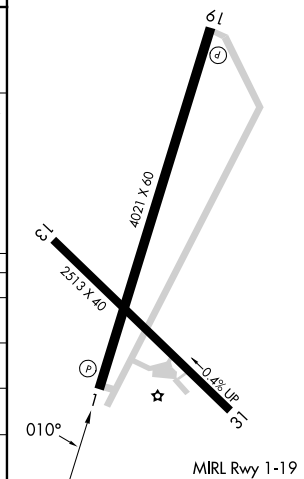
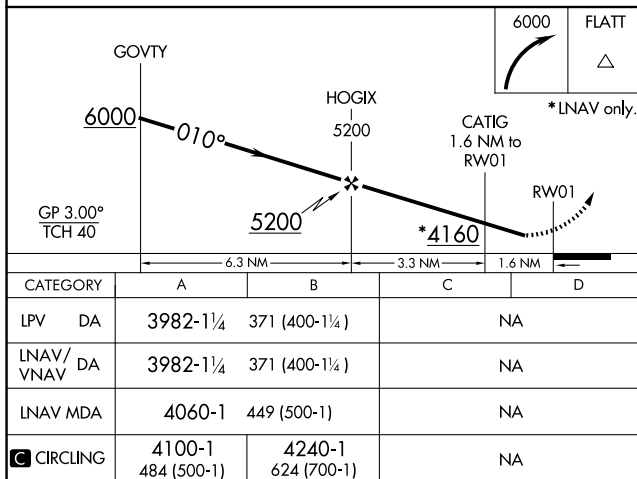
LBB ASOS  
125,3 270,275

LUBBOCK APP CON  
**119.2 351.8**

UNICOM  
122.8 (CTAF)



ELEV 3616		TDZE 3611
-----------	--	-----------



LITTLEFIELD, TEXAS  
Orig-A 02APR15

LITTLEFIELD TAYLOR BROWN MUNI (LIU)  
RNAV (GPS) RWY 1

33°55'N-102°23'W

SC-2, 10 JUL 2025 to 07 AUG 2025