

LAMAR, MISSOURI

AL-6725 (FAA)

23222

WAAS CH 77536 W35A	APP CRS 347°	Rwy Idg 4000 TDZE 1005 Apt Elev 1010
----------------------------------------	------------------------	-----------------------------------------------------------------

RNAV (GPS) RWY 35

LAMAR MUNI (LLU)

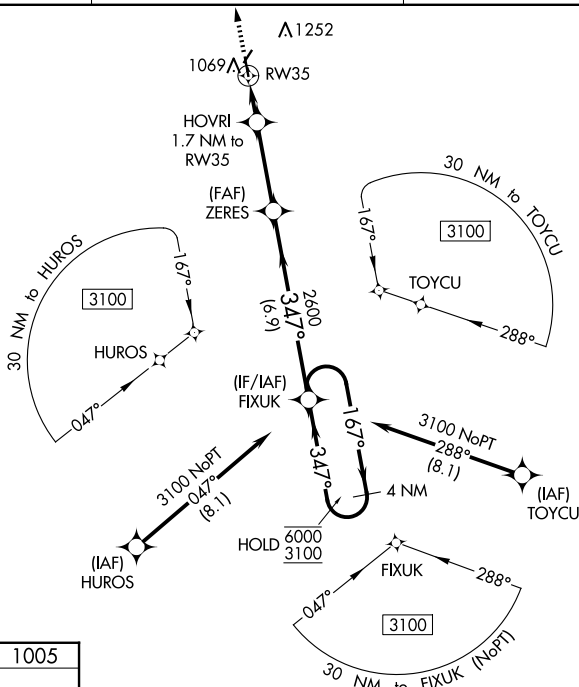
RNP APCH.

T Rwy 35 helicopter visibility reduction below $\frac{3}{4}$ SM NA. Baro-VNAV NA.
A NA Use Joplin altimeter setting. Circling Rwy 21 NA at night.

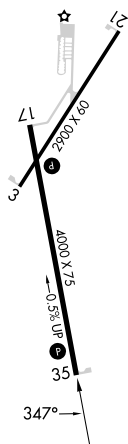
MISSED APPROACH: Climb to 3100 direct ROYOC and hold.

JLN ASOS 120.85	KANSAS CITY CENTER 128.6 282,325	CTAF 122.90
---------------------------	--------------------------------------------	-----------------------

MISSED APCH FIX



ELEV 1010	TDZE 1005
MIRL Rwy 3-21 and 17-35	
REIL Rwy 17 and 35	



LAMAR, MISSOURI
Orig-B 08NOV18

LAMAR MUNI (LLU)

37°29'N-94°19'W

RNAV (GPS) RWY 35

NC-3, 10 JUL 2025 to 07 AUG 2025