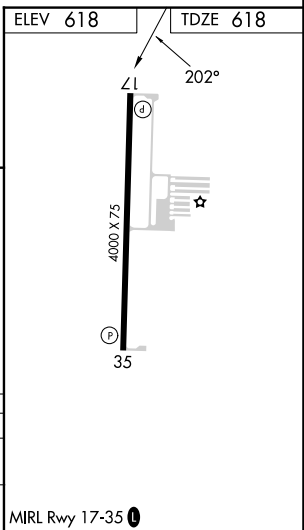
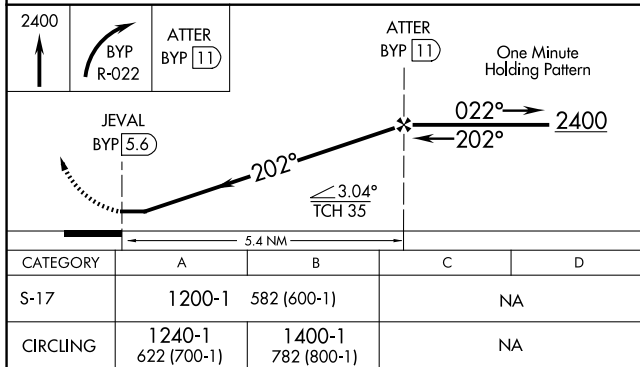
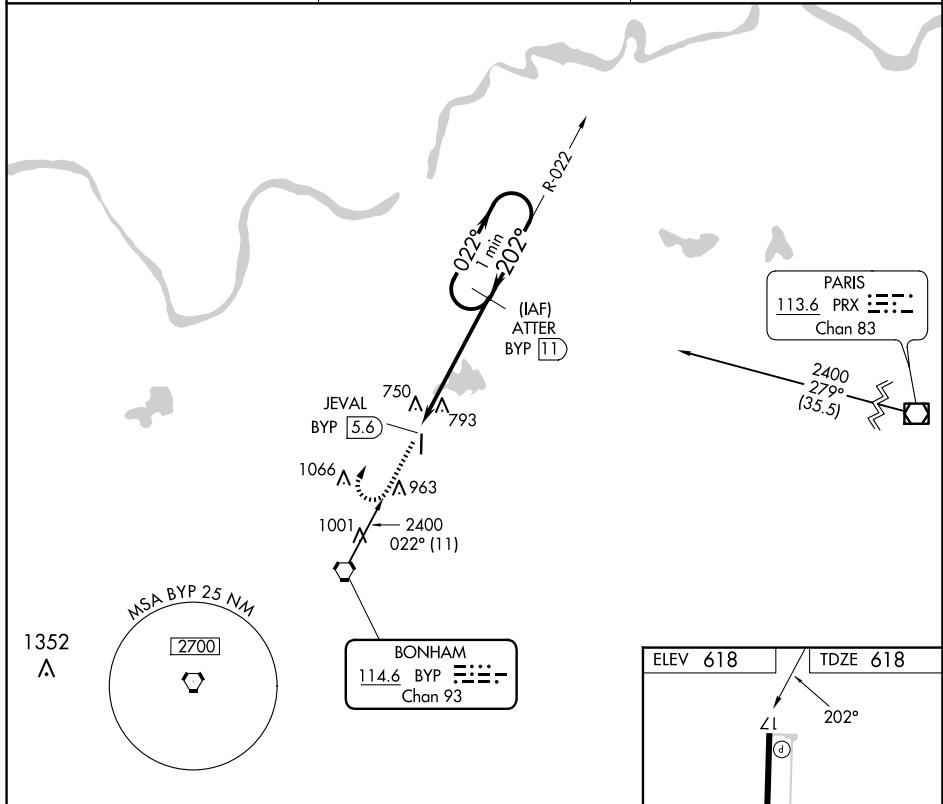


22307

VOR/DME RWY 17
JONES FLD (F000)

MISSED APPROACH: Climb to 2400, then right turn via BYP R-022 to ATTER/11 DME and hold.

| | | |
|----------------------------|---|---------------------------------|
| AWOS-3 PT 118.05 | FORT WORTH CENTER 127.6 254.3 | UNICOM 122.8 (CTAF) 0 |
|----------------------------|---|---------------------------------|



JONES FLD (F00)
VOR/DME RWY 17

SC-2, 10 JUL 2025 to 07 AUG 2025

SC-2. 10 JUL 2025 to 07 AUG 2025