

BONHAM, TEXAS

AL-6722 (FAA)

23362

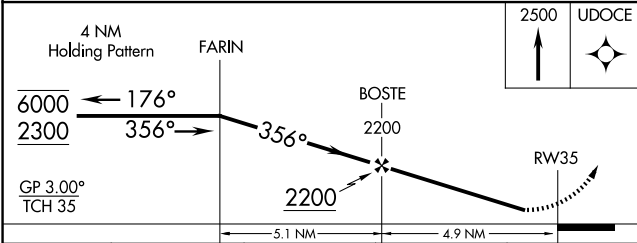
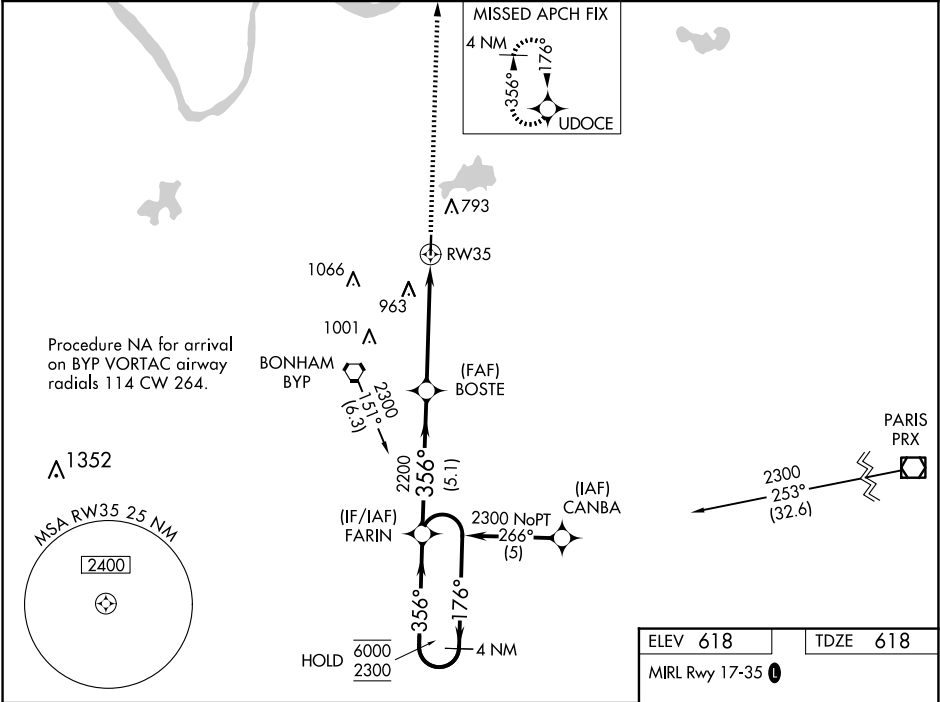
WAAS CH 86724 W35A	APP CRS 356°	Rwy ldg TDZE 618 Apt Elev 618
--	------------------------	---

RNAV (GPS) RWY 35

JONES FLD (F00)

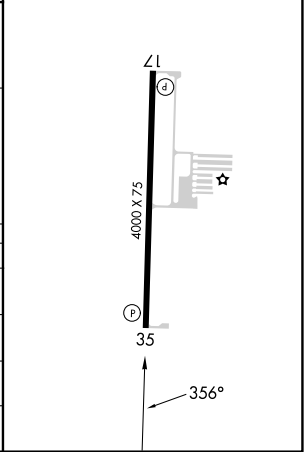
RNP APCH - GPS.	MISSED APPROACH: Climb to 2500 direct UDOCE and hold.
Baro-VNAV NA. Rwy 35 helicopter visibility reduction below 1 SM NA. When local altimeter setting not received, use Durant altimeter setting.	

AWOS-3 PT 118.05	FORT WORTH CENTER 127.6 254.3	UNICOM 122.8(CTAF)
----------------------------	---	------------------------------



CATEGORY	A	B	C	D
LPV DA	956-1	338 (400-1)	NA	
LNAV/VNAV DA	1314-2	696 (700-2)	NA	
LNAV MDA	1340-1	722 (800-1)	NA	
CIRCLING	1340-1 722 (800-1)	1400-1 782 (800-1)	NA	

ELEV 618	TDZE 618
MIRL Rwy 17-35	



BONHAM, TEXAS
Amdt 1C 28DEC23

33°37'N-96°11'W

JONES FLD (F00)

RNAV (GPS) RWY 35

SC-2, 10 JUL 2025 to 07 AUG 2025

SC-2, 10 JUL 2025 to 07 AUG 2025