

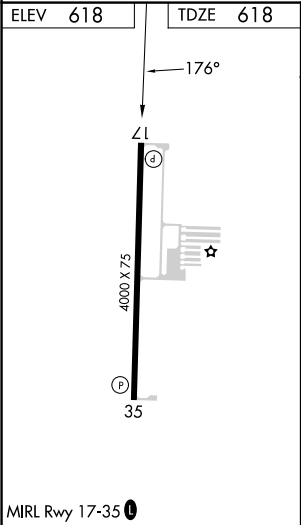
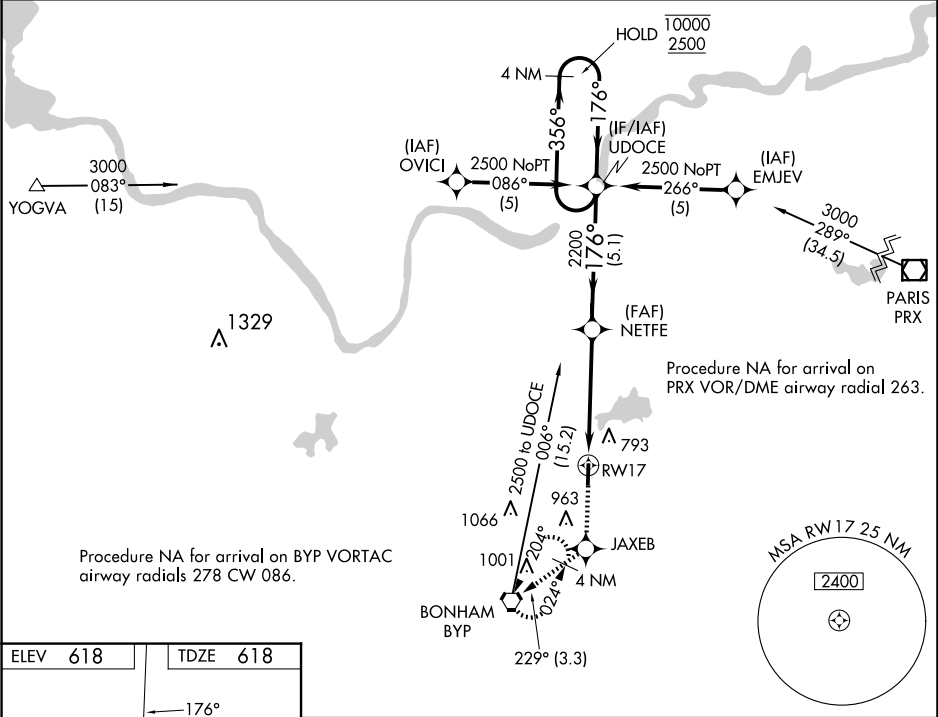
WAAS CH 99523 W17A	APP CRS 176°	Rwy Idg TDZE 618 Apt Elev 618
----------------------------------------	------------------------	---------------------------------------------------

RNAV (GPS) RWY 17

JONES FLD (F00)

RNP APCH - GPS.	MISSED APPROACH: Climb to 2500 direct JAXEB and on track 229° to BYP VORTAC and hold.
▼ Rwy 17 helicopter visibility reduction below 1 SM NA. Baro-VNAV NA. ▲ When local altimeter setting not received, use Durant altimeter setting.	

AWOS-3 PT 118.05	FORT WORTH CENTER 127.6 254.3	UNICOM 122.8(CTAF) 0
----------------------------	-----------------------------------------	--------------------------------



2500	JAXEB	tr 229°	BYP	UDOC	4 NM Holding Pattern
					GP 3.00° TCH 35
CATEGORY	A	B	C	D	
LPV DA	906-1	288 (300-1)	NA	NA	
LNAV/VNAV DA	1030-1½	412 (500-1½)	NA	NA	
LNAV MDA	1180-1	562 (600-1)	NA	NA	
CIRCLING	1240-1 622 (700-1)	1400-1 782 (800-1)	NA	NA	