

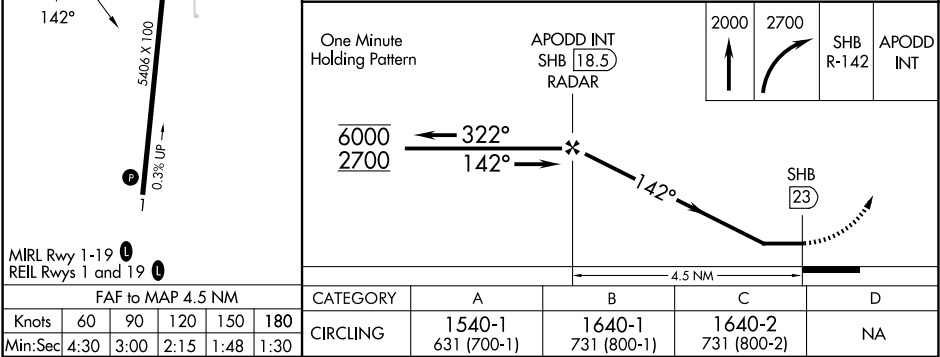
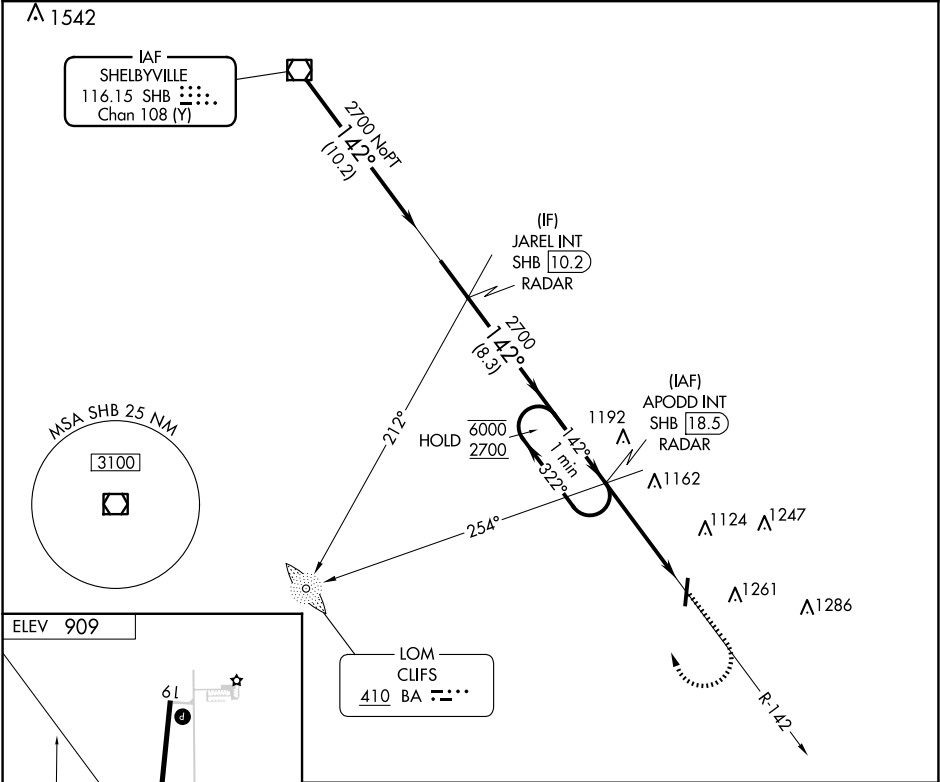
VOR/DME SHB	APP CRS	Rwy Idg	N/A
116.15	142°	TDZE	N/A
Chan 108 (Y)		Apt Elev	909

VOR-A

GREENSBURG MUNI (I34)

ADF or RADAR or DME required.	MISSED APPROACH: Climb to 2000 then climbing right turn to 2700 on SHB R-142 to APODD INT/SHB 18.5 DME/RADAR and hold.
Use Columbus Muni altimeter setting, when not received, use Indianapolis Intl altimeter setting and increase all MDAs 40 feet and visibility Cat C ¼ SM.	

BAK AWOS-3 119.75	INDIANAPOLIS APP CON 127.15	CTAF 122.9
----------------------	--------------------------------	---------------



EC-2, 10 JUL 2025 to 07 AUG 2025

EC-2, 10 JUL 2025 to 07 AUG 2025