

|         |          |      |
|---------|----------|------|
| APP CRS | Rwy Ldg  | 7000 |
| 342°    | TDZE     | 462  |
|         | Apt Elev | 478  |

RNAV (GPS) RWY 36

CLARK RGNL (JVY)

RNP APCH - GPS.

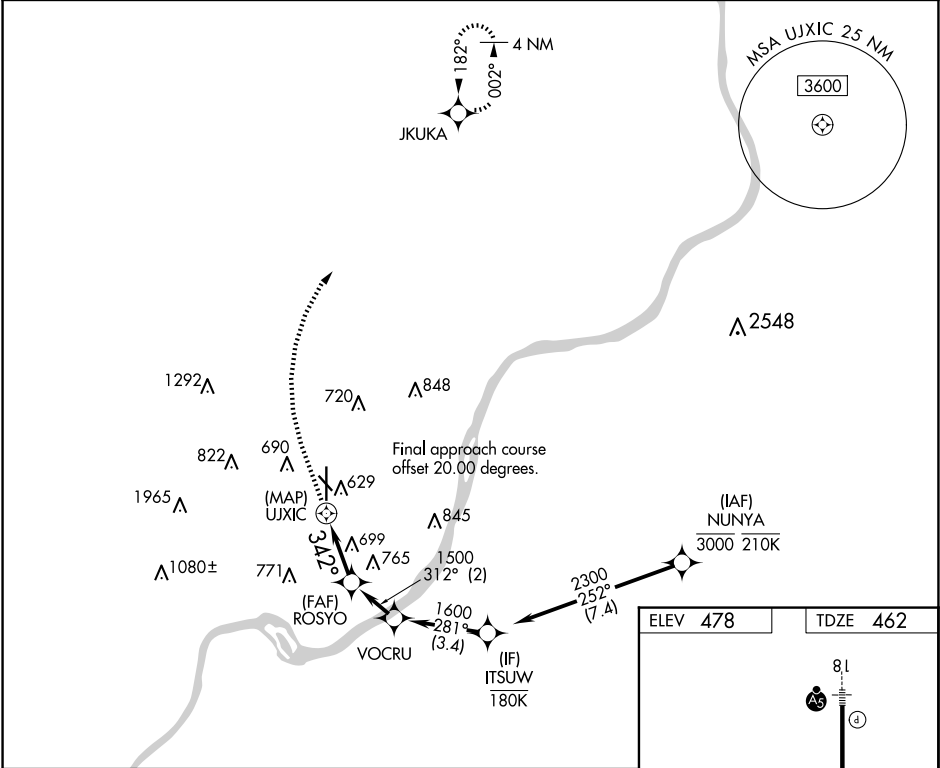
▼

⚠

Rwy 36 helicopter visibility reduction below 1 SM NA. Circling NA for Cat D southwest of Rwys 14 and 36. When local altimeter setting not recieved, use Louisville Muhammad Ali Intl altimeter setting and increase all MDAs 40 feet and visibility LNAV Cat C/D ⅛ SM, and Circling Cat C ¼ SM. Straight-In Rwy 36 NA at night, Circling Rwy 14, 32, 36 NA at night.

MISSED APPROACH:  
Climb to 1000 then climbing right turn to 3000 direct JKUKA and hold.

|                   |                                     |                    |                          |
|-------------------|-------------------------------------|--------------------|--------------------------|
| AWOS-3<br>118.575 | LOUISVILLE APP CON<br>132.075 327.0 | CLNC DEL<br>118.05 | UNICOM<br>122.7 (CTAF) 0 |
|-------------------|-------------------------------------|--------------------|--------------------------|



|  |                       |                       |                         |                       |
|--|-----------------------|-----------------------|-------------------------|-----------------------|
| <div>ITSUW 2300</div> <div>VOCR 1600</div> <div>ROSY 1500</div> <div>UJXC</div> <div>JKUKA</div> |                       |                       |                         |                       |
| <div>281°</div> <div>312°</div> <div>342°</div> <div>3.00° TCH 40</div>                          |                       |                       |                         |                       |
| <div>3.4 NM</div> <div>2 NM</div> <div>2.6 NM</div> <div>0.5 NM</div>                            |                       |                       |                         |                       |
| CATEGORY   | A                     | B                     | C                       | D                     |
| LNAV MDA   | 1000-1                | 538 (600-1)           | 1000-1½                 | 538 (600-1½)          |
| CIRCLING   | 1000-1<br>522 (600-1) | 1040-1<br>562 (600-1) | 1060-1½<br>582 (600-1½) | 1100-2<br>622 (700-2) |

ELEV 478      TDZE 462

REIL Rwys 14, 32, and 36 0  
MIRL Rwys 14-32 and 18-36 0