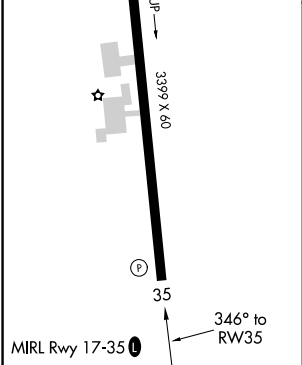
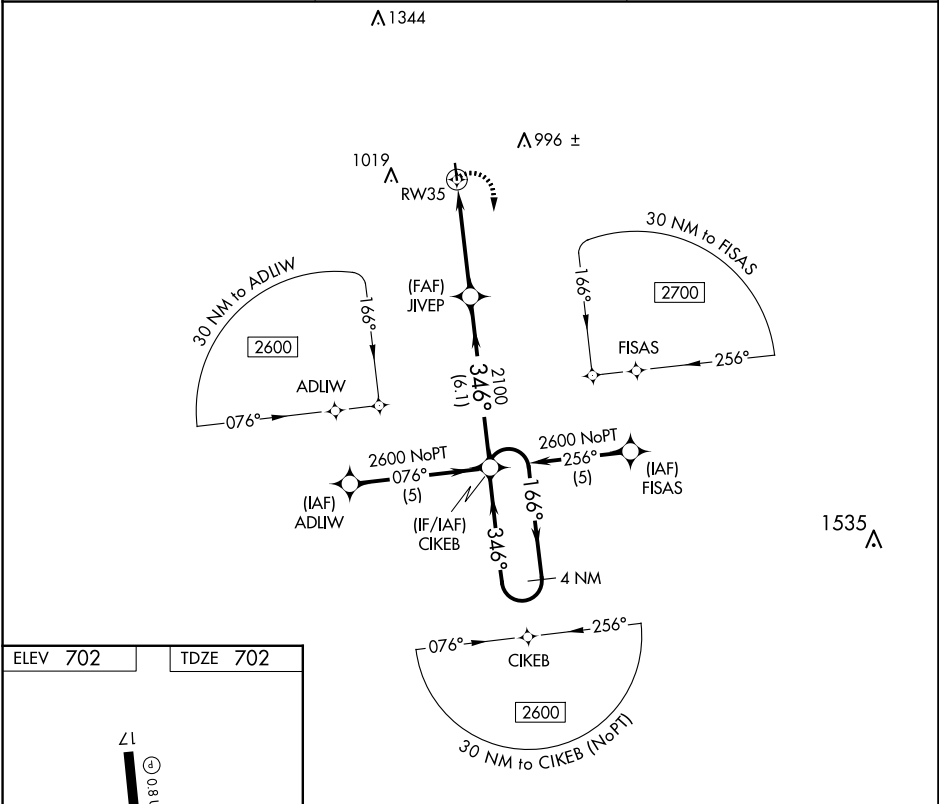


APP CRS	Rwy Idg	3399
346°	TDZE	702
	Apt Elev	702

RNAV (GPS) RWY 35
DEVINE MUNI (23R)

<p>▼ DME/DME RNP-0.3 NA. Use Castroville Muni altimeter setting; when not received, use Hondo Muni altimeter setting and increase all MDA 40 feet.</p> <p>▲ NA Night landing: Rwy 35 NA. Helicopter visibility below 1 SM NA.</p>	<p>MISSED APPROACH: Climbing right turn to 2600 direct CIKEB and hold.</p>
---	--

CVB AWOS-3 119.25	HOUSTON CENTER 134.95 269.4	CTAF 122.9 0
----------------------	--------------------------------	-----------------



2600	CIKEB	Visual Segment - Obstacles.	CIKEB	4 NM Holding Pattern
CATEGORY	A	B	C	D
LNAV MDA	1140-1	438 (500-1)	NA	
CIRCLING	1380-1	678 (700-1)	NA	

SC-3, 10 JUL 2025 to 07 AUG 2025

SC-3, 10 JUL 2025 to 07 AUG 2025