

VOR/DME EWO	APP CRS	Rwy Idg	N/A
113.95	284°	TDZE	N/A
Chan 86 (Y)		Apt Elev	776

VOR-A

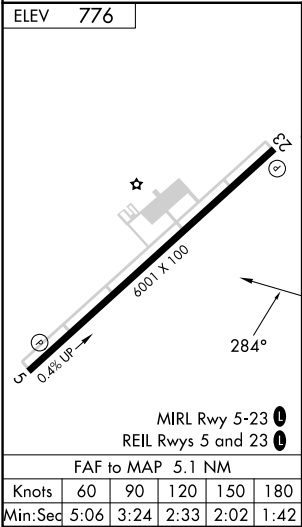
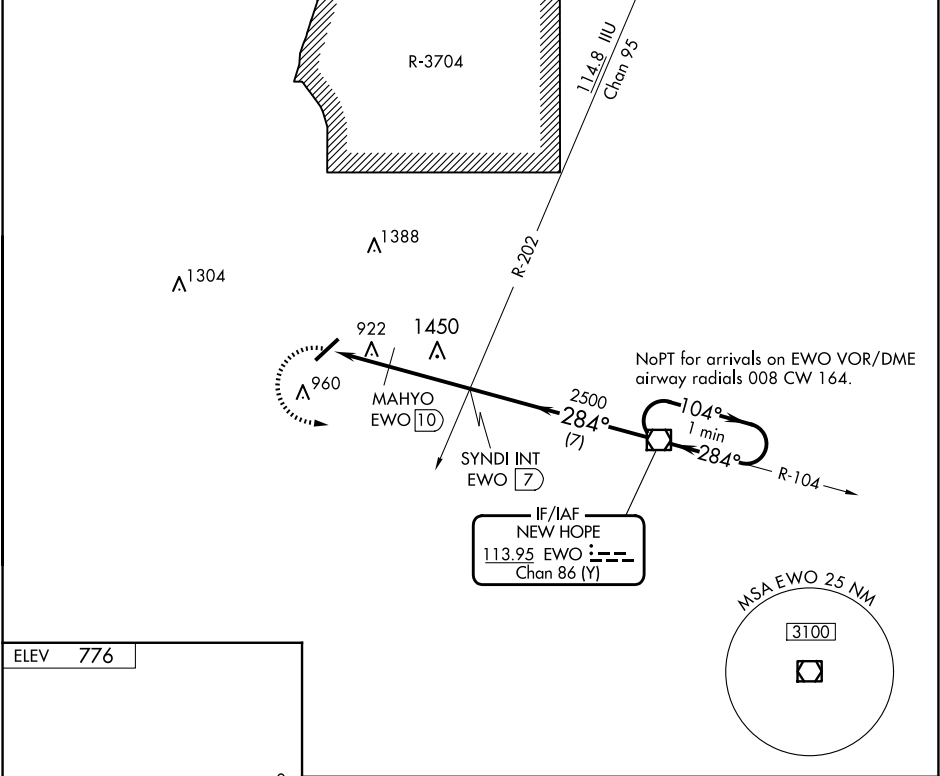
ADDINGTON FLD (EKK)




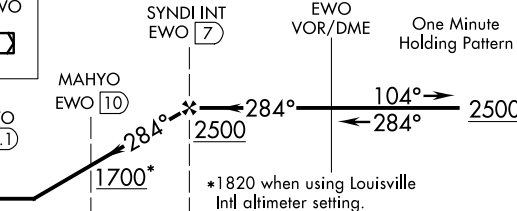
NA

When local altimeter setting not received, use Bardstown altimeter setting: increase all MDAs 80 feet and visibility Cat B and Cat C ¼ SM; MAHYO fix minimums: increase visibility Cat C ¼ SM.

MISSED APPROACH: Climbing left turn to 2500 direct to EWO VOR/DME and hold.

AWOS-3 121.025	LOUISVILLE APP CON 132.075 327.0	CLNC DEL 119.45	UNICOM 123.075 (CTAF) 0
-------------------	-------------------------------------	--------------------	----------------------------



<div>2500</div> <div></div> <div><div>EWO</div><div></div></div>		<div>SYNDI INT EWO <div>7</div></div>		<div>EWO VOR/DME</div> <div>One Minute Holding Pattern</div>	
<div><div>EWO <div>12.1</div></div><div></div></div>		<div>MAHYO EWO <div>10</div></div> <div></div> <div>*1820 when using Louisville Init altimeter setting.</div>			
<div>2.1 NM</div>		<div>3 NM</div>		<div>7 NM</div>	
CATEGORY	A		B		C
CIRCLING	1700-1¼ 924 (1000-1¼)		1700-2¾ 924 (1000-2¾)		1760-3 984 (1000-3)
MAHYO FIX MINIMUMS					
CIRCLING	1240-1 464 (500-1)	1260-1 484 (500-1)	1420-1¾ 644 (700-1¾)	1760-3 984 (1000-3)	