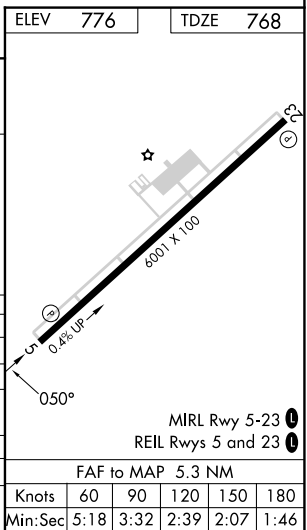
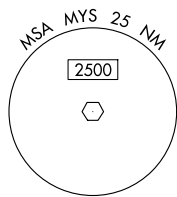
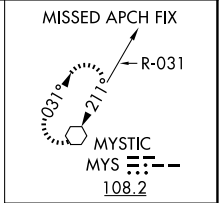




ILS or LOC RWY 5
ADDINGTON FLD (EKK)



CATEGORY	A	B	C	D
S-ILS 5	968 ^{-3/4}		200 (200 ^{-3/4})	
S-LOC 5	1260-1	492 (500-1)	1260-1 ^{3/8}	492 (500-1 ^{3/8})
 CIRCLING	1260-1	484 (500-1)	1420-1 ^{3/4} 644 (700-1 ^{3/4})	1760-3 984 (1000-3)
WAKUS FIX MINIMUMS (DUAL VOR RECEIVERS OR DME REQUIRED)				
S-LOC 5	1140-1		372 (400-1)	
 CIRCLING	1240-1 464 (500-1)	1260-1 484 (500-1)	1420-1 ^{3/4} 644 (700-1 ^{3/4})	1760-3 984 (1000-3)

SE-1, 10 JUL 2025 to 07 AUG 2025

SE-1, 10 JUL 2025 to 07 AUG 2025