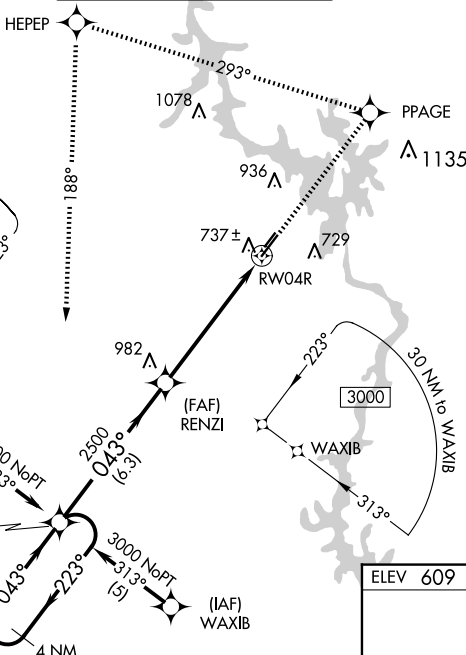


RNAV (GPS) RWY 4R
STANLY COUNTY (VUJ)

MISSED APPROACH: Climb to 3000 direct PPAGE and left turn on track 293° to HEPEP and left turn on track 188° to OCDAM and hold.

CLNC DEL
121.75 254.375



ELEV 609

TDZE 609

22L 22R

0.43°

3501 X 75

5479 X 100

TWR

4L

4R

0.43°

REIL Rws 4R and 22L

MIRL Rws 4L-22R

HIRL Rws 4R-22L

REIL Rwys 4R and 22L **L**
MIRL Rwys 4L-22R **L**
HIRL Rwys 4R-22L **L**

SE-2. 10 JUL 2025 to 07 AUG 2025