

WAAS CH <b>78317</b> <b>W22A</b>	APP CRS <b>223°</b>	Rwy Idg <b>5499</b> TDZE <b>584</b> Apt Elev <b>609</b>
--	------------------------	---

RNAV (GPS) RWY 22L  
STANLY COUNTY (VUJ)

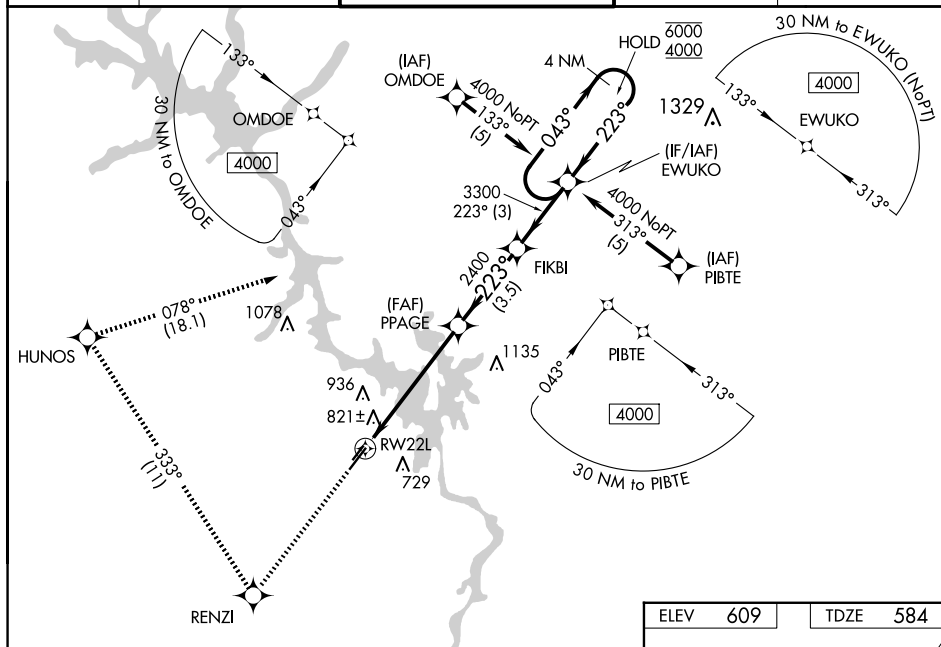
RNP APCH-GPS.	
---------------	--



Circling Rwy 4L, 22R NA at night.  
Rwy 22L helicopter visibility reduction below  $\frac{3}{4}$  SM NA.  
For uncompensated Baro-VNAV systems, LNAV/VNAV NA  
below -16°C or above 54°C.

**MISSED APPROACH:** Climb to 4000 direct RENZI and right turn on track 333° to HUNOS and right turn on track 078° to EWUKO and hold.

AWOS-3 128.175	CHARLOTTE APP CON 128.325 307.8	STANLY COUNTY TOWER★ 126.275 (CTAF) 0 291.9	GND CON 121.75 254.375	CLNC DEL 121.75 254.375
-------------------	------------------------------------	--	---------------------------	----------------------------



4000 ↑		RENZI ✧	HUNOS ✧	EWUKO ✧	4 NM Holding Pattern EWUKO	
1.5 NM to RW22L ↙ RW22L		PPAGE 2400	FIKBI 2400	043° → 6000 ← 223° 4000 GP 3.04° TCH 40		
1.5 NM		4 NM	3.5 NM	3 NM		
CATEGORY	A	B	C	D		
LPV DA	919-1		335 (400-1)			
LNAV/VNAV DA	1272-2		688 (700-2)			
LNAV MDA	1100-1	516 (500-1)	1100-1 $\frac{3}{8}$	516 (500-1 $\frac{3}{8}$ )		
<b>C</b> CIRCLING	1260-1	651 (700-1)	1260-1 $\frac{3}{4}$ 651 (700-1 $\frac{3}{4}$ )	1380-2 $\frac{1}{2}$ 771 (800-2 $\frac{1}{2}$ )		

