

LOM VU 346	APP CRS 224°	Rwy Idg 5499 TDZE 584 Apt Elev 609
----------------------	------------------------	---

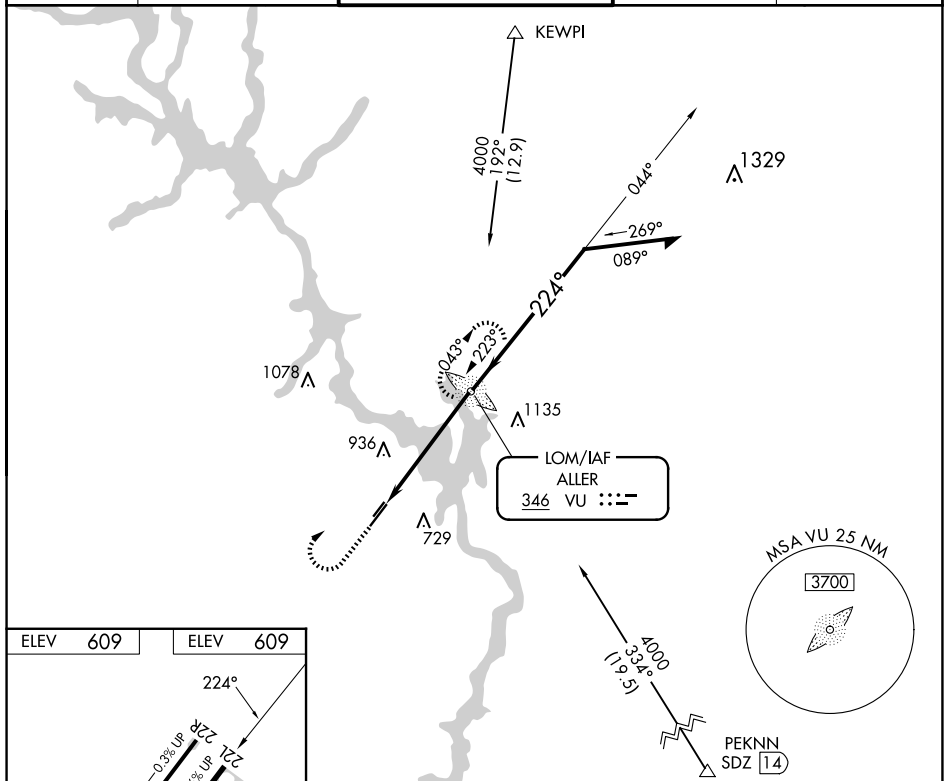
NDB RWY 22L
STANLY COUNTY (VUJ)

PAR


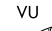
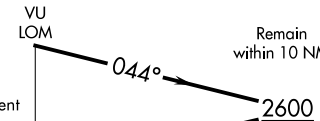
Circling to Rwy 4L/22R NA at night. When local altimeter setting not received, use Asheville altimeter setting and increase all MDA 60 feet; increase S-22L Cats C and D, and Circling Cats C and D visibility $\frac{1}{4}$ mile.

MISSED APPROACH: Climb to 1500 then climbing right turn to 4000 direct ALLER LOM and hold, continue climb-in-hold to 4000.

AWOS-3 128.175	CHARLOTTE APP CON 128.325 307.8	STANLY COUNTY TOWER★ 126.275 (CTAF) 0 291.9	GND CON 121.75 254.375	CLNC DEL 121.75 254.375
-------------------	------------------------------------	--	---------------------------	----------------------------



FAF to MAP 5.1 NM	
Knots	60 90 120 150 180
Min:Sec	5:06 3:24 2:33 2:02 1:42

<div><div><div><div>1500</div><div>↑</div></div><div><div>4000</div><div></div></div><div><div>VU</div><div></div></div></div><div><div>VGS1 and descent angles not coincident (VGS1 Angle 3.00/TCH 40).</div><div></div></div></div>					
CATEGORY	A		B	C	D
S-22L	1240-1 656 (700-1)			1240-1 $\frac{3}{4}$ 656 (700-1 $\frac{3}{4}$)	1240-2 656 (700-2)
CIRCLING	1260-1 651 (700-1)			1260-1 $\frac{3}{4}$ 651 (700-1 $\frac{3}{4}$)	1380-2 $\frac{1}{2}$ 771 (800-2 $\frac{1}{2}$)