

ALBEMARLE, NORTH CAROLINA

AL-6707 (FAA)

23110

LOC I-VUJ <u>110.55</u>	APP CRS 223°	Rwy Idg 5499 TDZE 584 Apt Elev 609
-----------------------------------	------------------------	---

ILS or LOC RWY 22L
STANLY COUNTY (VUJ)

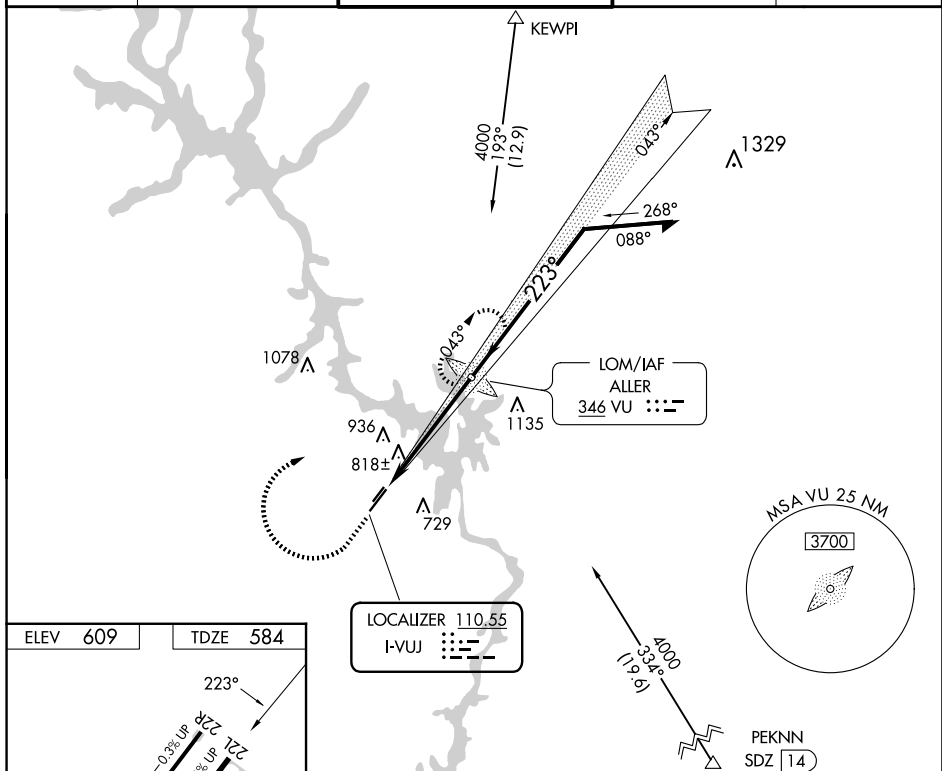
ADF required.



Circling Rwy 4L, 22R NA at night.
Rwy 22L helicopter visibility reduction below $\frac{3}{4}$ SM NA.

MISSED APPROACH: Climb to 1500 then climbing right turn to 4000 direct ALLER LOM and hold, continue climb-in-hold to 4000.

AWOS-3 128.175	CHARLOTTE APP CON 128.325 307.8	STANLY COUNTY TOWER★ 126.275 (CTAF) 0 291.9	GND CON 121.75 254.375	CLNC DEL 121.75 254.375
-------------------	------------------------------------	--	---------------------------	----------------------------



REIL Rwy's 4R and 22L
MRL Rwy's 4L-22R
HIRL Rwy's 4R-22L

FAF to MAP 5.1 NM					
Knots	60	90	120	150	180
Min:Sec	5:06	3:24	2:33	2:02	1:42

ALBEMARLE, NORTH CAROLINA

Amdt 1D 08SEP22

35°25'N-80°09'W

STANLY COUNTY (VUJ)

ILS or LOC RWY 22L

SE-2, 10 JUL 2025 to 07 AUG 2025