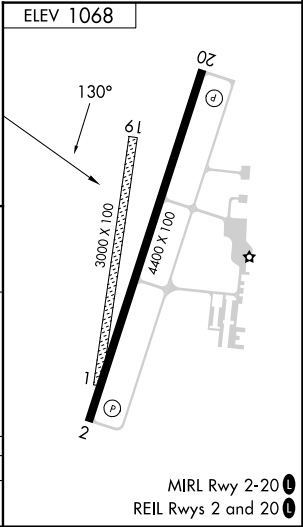
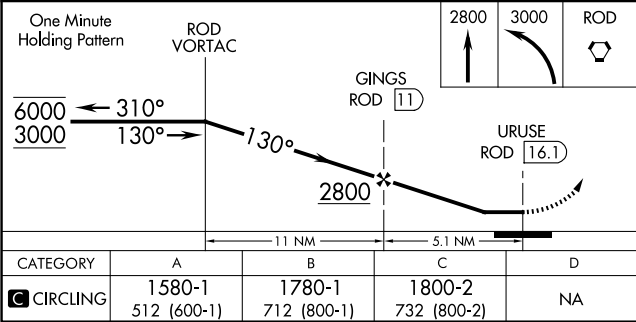
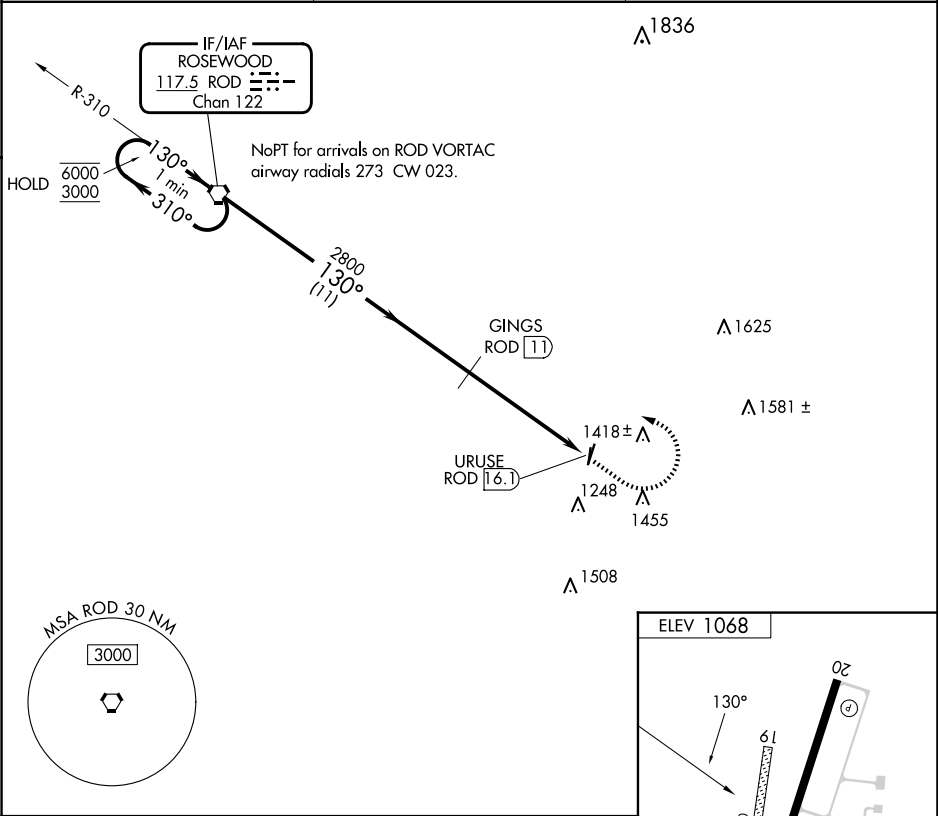


VORTAC ROD	APP CRS	Rwy Idg	N/A
117.5	130°	TDZE	N/A
Chan 122		Apt Elev	1068

VOR-A

GRIMES FLD (I74)

DME required.		MISSED APPROACH: Climb to 2800 then climbing left turn to 3000 direct ROD VORTAC and hold.
<div><div></div><div></div></div> <div>Circling NA to Rwys 1 and 19. When local altimeter setting not received, use Springfield altimeter setting and increase all MDAs 60 feet and Cat C visibility ¼ SM.</div>	AWOS-3 118.325	
	COLUMBUS APP CON 134.45 294.5	UNICOM 122.7 (CTAF) <div></div>



EC-2, 10 JUL 2025 to 07 AUG 2025

EC-2, 10 JUL 2025 to 07 AUG 2025