

WAAS CH 53719 W02A	APP CRS 022°	Rwy Ldg TDZE Apt Elev	4400 1068 1068
--	------------------------	-----------------------------	---

RNAV (GPS) RWY 2

GRIMES FLD (I74)

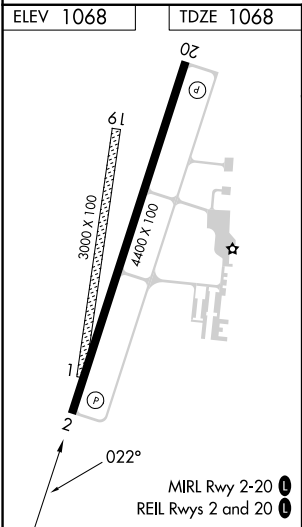
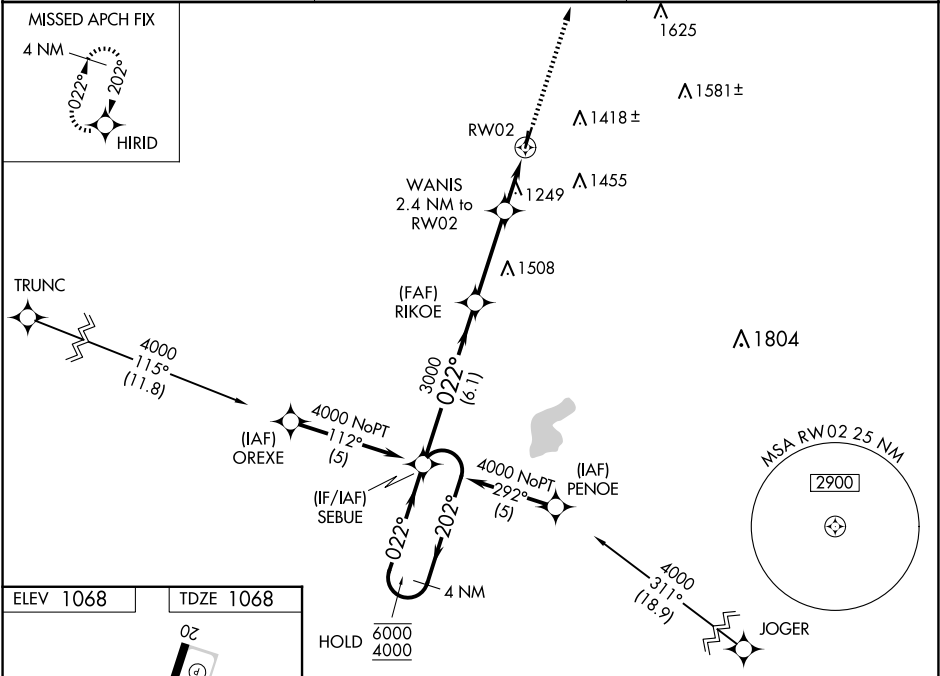
RNP APCH.

▼

Baro-VNAV and VDP NA when using Springfield altimeter setting. Rwy 2 helicopter visibility reduction below ¾ SM NA. For uncompensated Baro-VNAV systems, LNAV/VNAV NA below -17°C or above 54°C. When local altimeter setting not received, use Springfield altimeter setting and increase all DAs 44 feet, all MDAs 60 feet, increase LNAV/VNAV all Cats visibility ¼ SM, and increase Circling Cat C visibility ¼ SM. Circling NA to Rwy 1 and 19.

MISSED APPROACH:
Climb to 3000 direct
HIRID and hold.

AWOS-3 118.325	COLUMBUS APP CON 134.45 294.5	UNICOM 122.7 (CTAF) 0
--------------------------	---	---------------------------------



4 NM Holding Pattern				SEBUE	RIKOE	WANIS	*LNAV only.	3000	HIRID
6000 4000				← 202° 022° →	022°	2.4 NM to RW02		↑	✧
GP 3.00° TCH 44					3000	*1.3 NM to RW02			
				6.1 NM	3.5 NM	1.1	1.3		
CATEGORY	A	B	C	D					
LPV DA	1318-1		250 (300-1)				NA		
LNAV/VNAV DA	1501-1½		433 (500-1½)				NA		
LNAV MDA	1500-1		432 (500-1)		1500-1¼ 432 (500-1¼)		NA		
CIRCLING	1580-1 512 (600-1)		1780-1 712 (800-1)		1800-2 732 (800-2)		NA		