

LADYSMITH, WISCONSIN

AL-6704 (FAA)

22363

WAAS CH <b>77921</b> <b>W14A</b>	APP CRS <b>140°</b>	Rwy Idg <b>4001</b> TDZE <b>1237</b> Apt Elev <b>1240</b>
--	------------------------	---

RNAV (GPS) RWY 14  
RUSK COUNTY (RCX)

RNP APCH.

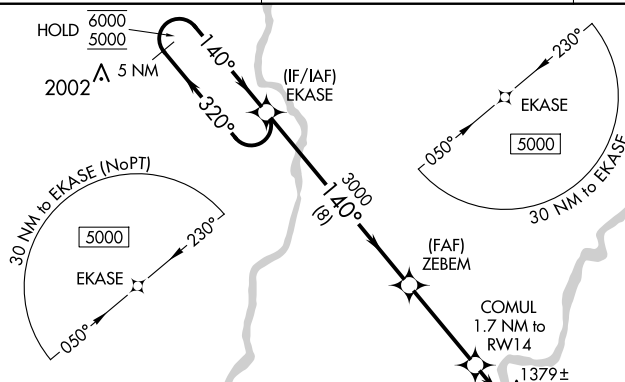


Rwy 14 helicopter visibility reduction below 1 SM NA. Straight-in Rwy 14 NA at night, Circling Rwy 1, 14, 19 NA at night. When local altimeter setting not received, use Rice Lake altimeter setting and increase all MDAs 100 feet.

**MISSED APPROACH:** Climb to 5000 direct FIMOG and hold, continue climb-in-hold to 5000.

AWOS-3  
118.125

MINNEAPOLIS CENTER  
133.65 281.5

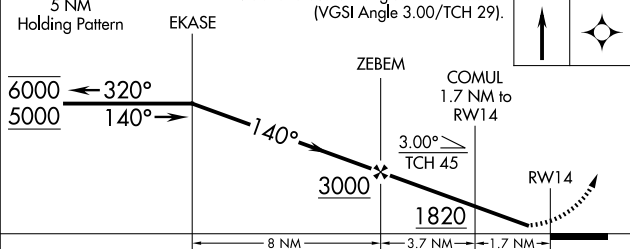
UNICOM  
122.8 (CTAF) **L**

MISSED APCH FIX

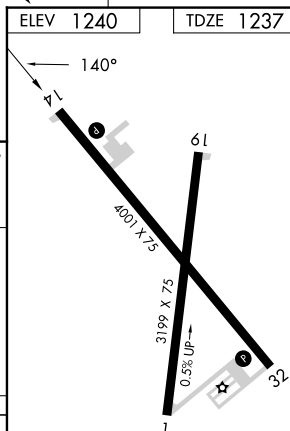
5 NM  
Holding Pattern

VGSI and descent angles not coincident  
(VGSI Angle 3.00/TCH 29).

5000	FIMOG
------	-------



CATEGORY	A	B	C	D
LNAV MDA	1640-1	403 (400-1)	NA	
CIRCLING	1680-1 440 (500-1)	1700-1 460 (500-1)	NA	



REIL Rwys 14 and 32 **L**  
MIRL Rwys 14-32 and 1-19 **L**

LADYSMITH, WISCONSIN  
Orig-B 31JAN19

45°30'N-91°00'W

RUSK COUNTY (RCX)

RNAV (GPS) RWY 14

EC-3, 10 JUL 2025 to 07 AUG 2025