

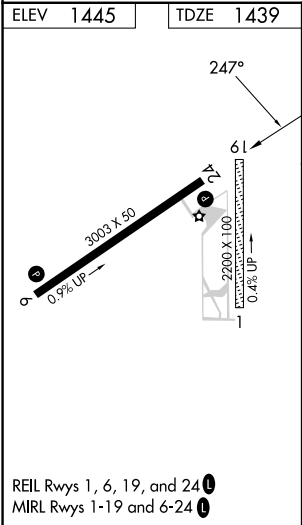
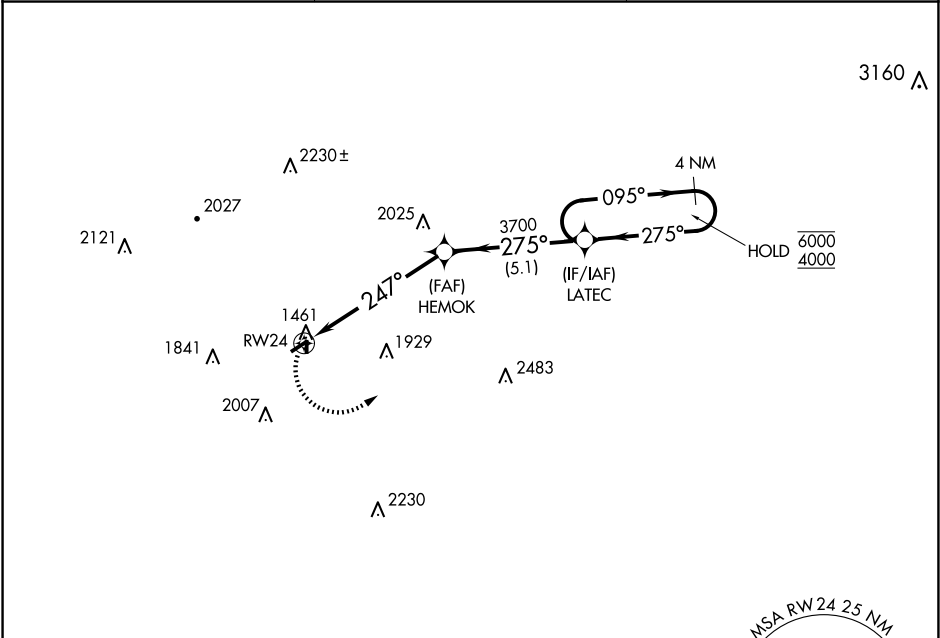
APP CRS	Rwy Idg	3003
247°	TDZE	1439
	Apt Elev	1445

RNAV (GPS) RWY 24

PUNXSUTAWNEY MUNI (N35)

RNP APCH - GPS.	MISSED APPROACH: Climbing left turn to 4000 direct LATEC and hold.
NA Circling NA to Rwy 1 and 19. Rwy 24 helicopter visibility reduction below ¾ SM NA. Use Dubois Rgnl altimeter setting.	

DUJ ASOS 119.025	CLEVELAND CENTER 126.725 291.65	UNICOM 123.0 (CTAF) 0
---------------------	------------------------------------	--------------------------



4000	LATEC	VGSI and descent angles not coincident (VGSI Angle 4.00/TCH 40).	4 NM Holding Pattern	
<p>The diagram illustrates a flight path starting from RW24, proceeding to HEMOK, and then to a holding pattern. Key features include:<ul style="list-style-type: none">HEMOK: A point marked with an 'X' at an altitude of 3700.Angles: A 247° angle from RW24 to HEMOK, a 275° angle from HEMOK to the holding pattern, and a 095° angle for the holding pattern. A 3.50° angle is also indicated near HEMOK.Distances: 6 NM from RW24 to HEMOK, and 5.1 NM from HEMOK to the holding pattern.Holding Pattern: A 4 NM pattern with a 275° inbound angle and a 095° outbound angle, with altitudes of 6000 and 4000 indicated.</p>				
CATEGORY	A	B	C	D
LNAV MDA	2160-1	721 (800-1)	NA	
CIRCLING	2180-1 735 (800-1)	2260-1¼ 815 (900-1¼)	NA	