

WAAS CH 63135 W32A	APP CRS 323°	Rwy Idg TDZE Apt Elev	4400 1800 1800
--	------------------------	-----------------------------	---

RNAV (GPS) RWY 32

SMITH CENTER MUNI (K82)

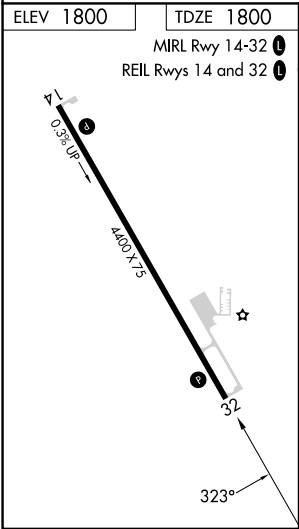
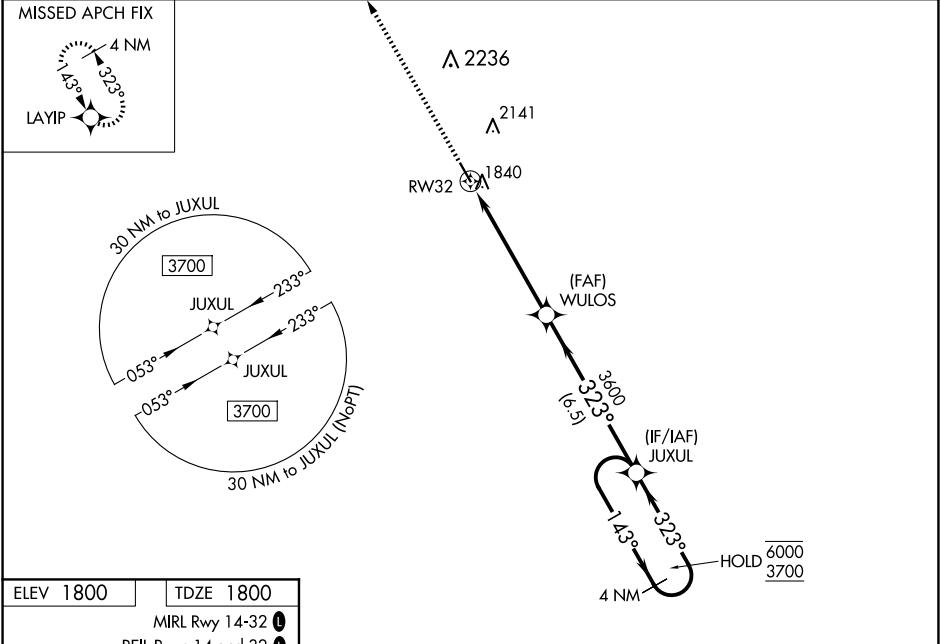
RNP APCH - GPS.



⚠

Baro-VNAV and VDP NA when using CNK altimeter setting. For uncompensated Baro-VNAV systems, LNAV/VNAV NA below -18°C or above 54°C. When local altimeter setting not received, use CNK altimeter setting: increase LPV DA to 2174 feet; increase LNAV/VNAV DA to 2224 feet and all visibilities ¼ SM; increase all MDAs 180 feet, and Circling all visibilities ½ SM.

MISSED APPROACH: Climb to 3900 direct LAYIP and hold.

AWOS-3PT 118.45	MINNEAPOLIS CENTER 119.4 278.8	UNICOM 122.8 (CTAF) 0
---------------------------	--	---------------------------------



3900	LAYIP	JUXUL			
		4 NM Holding Pattern			

NC-2, 10 JUL 2025 to 07 AUG 2025

NC-2, 10 JUL 2025 to 07 AUG 2025