

WAAS CH 70339 W34A	APP CRS 340°	Rwy Idg 3400 TDZE 1107 Apt Elev 1107
--	------------------------	---

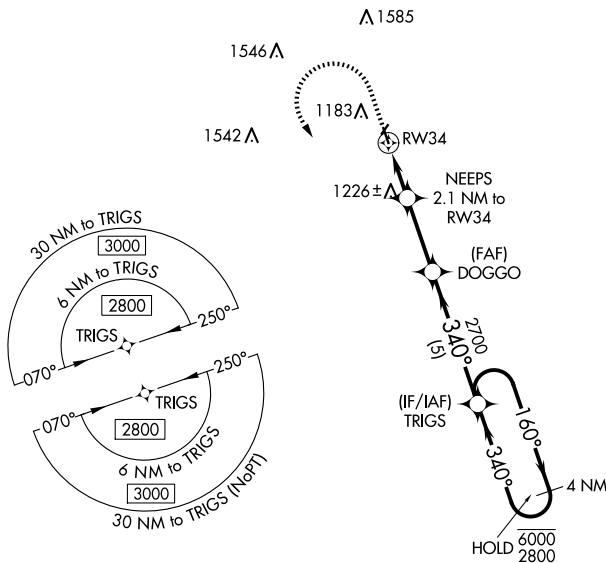
RNAV (GPS) RWY 34
BLUE EARTH MUNI (SBU)

RNP APCH - GPS.

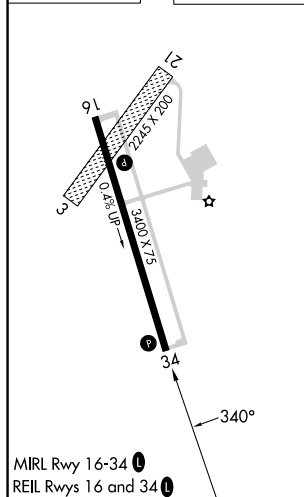
V	Baro-VNAV NA. Rwy 34 helicopter visibility reduction below 1 SM NA.
A NA	Circling NA to Rwy 3 and 21. Use FRM altimeter setting; when not received, use FXY altimeter setting and increase LPV DA to 1443 feet and all visibilities $\frac{1}{8}$ SM. Increase LNAV/VNAV DA to 1593 feet; increase all MDAs 60 feet and visibility Cat C $\frac{1}{4}$ SM.

MISSED APPROACH: Climb to 1 600 then climbing left turn to 2800 direct TRIGS and hold.

FRM AWOS-3PT 120.025	MINNEAPOLIS CENTER 127.75 257.7	GCO 121.725	UNICOM 122.8 (CTAF) 0
--------------------------------	---	-----------------------	---------------------------------



ELEV 1107		TDZE 1107
-----------	--	-----------



BLUE EARTH, MINNESOTA
Orig-A 26DEC24

43°36'N-94°06'W

BLUE EARTH MUNI (SBU)
RNAV (GPS) RWY 34

NC-1, 10 JUL 2025 to 07 AUG 2025

[illegible]

BLUE EARTH MUNI (SBU)