

APP CRS
091°

Rwy Idg
TDZE
Apt Elev

4000
836
842

RNAV (GPS) RWY 9

VINTON VETERANS MEML AIRPARK (VTI)

RNP APCH - GPS.

▼

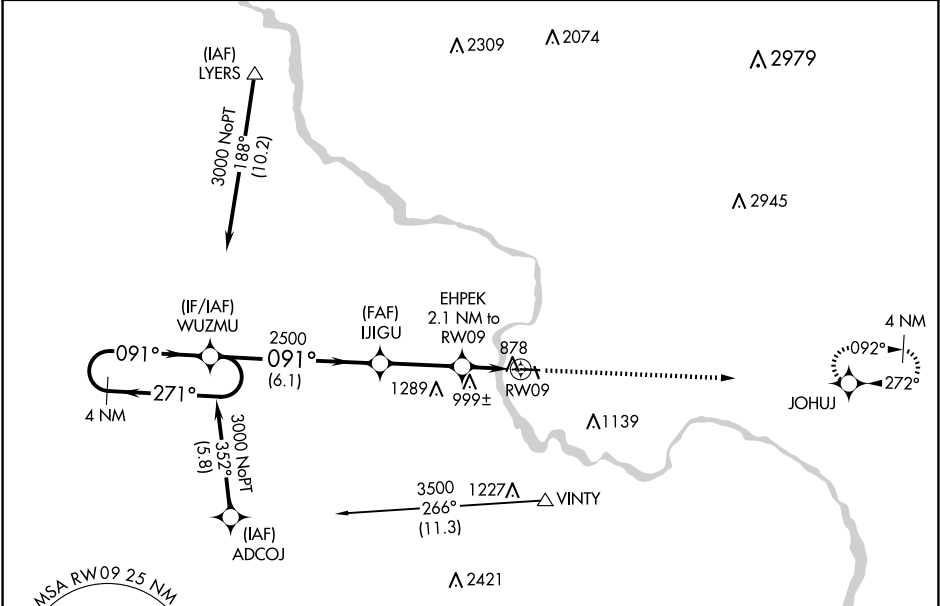
Straight-in Rwy 9/ Circling Rwy 9 at night, operational VGSI required, remain on or above VGSI glidepath until threshold. Rwy 9 helicopter visibility reduction below 1 SM NA.

▲

When local altimeter setting not received, use Independence altimeter setting and increase all MDA 60 feet.

MISSED APPROACH: Climb to 3000 direct JOHUJ and hold.

AWOS-3 120.075	CEDAR RAPIDS APP CON ★ 134.05 266.8	UNICOM 122.8 (CTAF) 1
-------------------	--	--------------------------



ELEV 842

TDZE 836

VGSI and descent angles not coincident (VGSI Angle 4.00/TCH 45)

3000 JOHUJ

4 NM Holding Pattern

WUZMU

IJIGU

EHPEK 2.1 NM to RW09

RW09

3000

271°

091°

091°

2500

3.04° TCH 45

1540

6.1 NM

3 NM

2.1 NM

091°

4000 x 60

0.4 % UP

91°

271°

2500 x 50

34

CATEGORY	A	B	C	D
LNAV MDA	1260-1 424 (500-1)		NA	
CIRCLING	1320-1 478 (500-1)	1360-1 518 (600-1)	NA	

REIL Rwys 9 and 27 1

MIRL Rwy 9-27 1