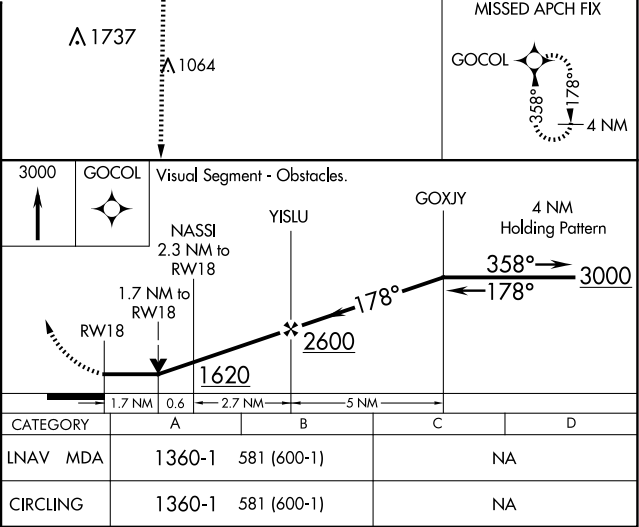
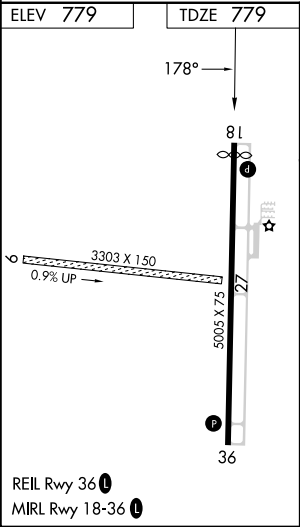
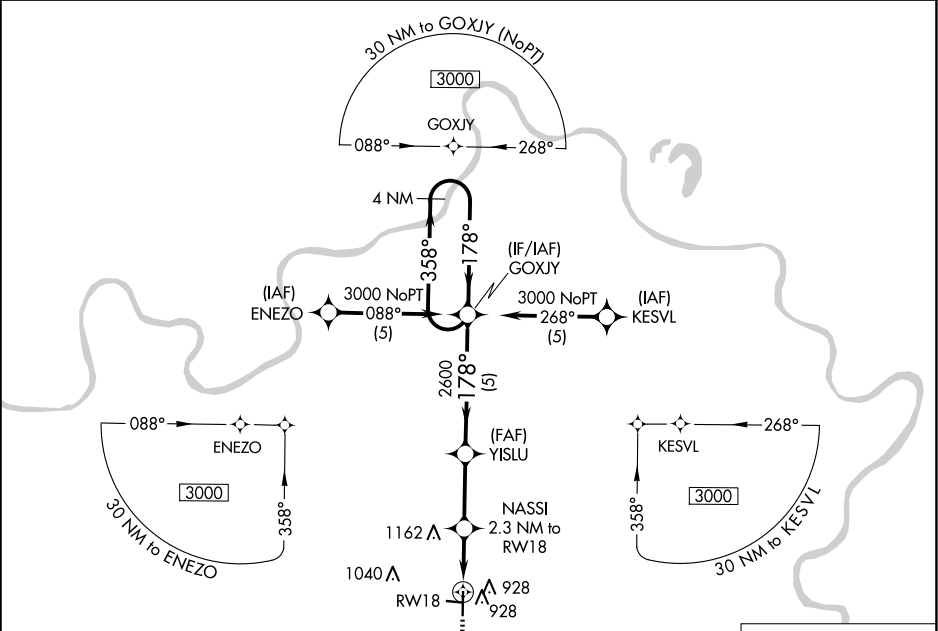


APP CRS	Rwy Idg	4805
178°	TDZE	779
	Apt Elev	779

RNAV (GPS) RWY 18

MARSHALL MEML MUNI (MHL)

RNP APCH.		MISSED APPROACH: Climb to 3000 direct GOCOL and hold.
AWOS-3PT 118.675	WHITEMAN APP CON ★ 127.45	UNICOM 122.8 (CTAF) 0



NC-3, 10 JUL 2025 to 07 AUG 2025

NC-3, 10 JUL 2025 to 07 AUG 2025