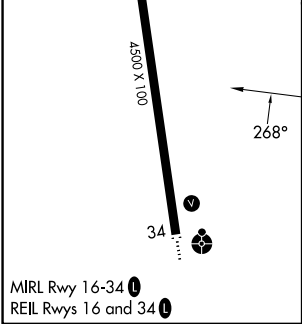
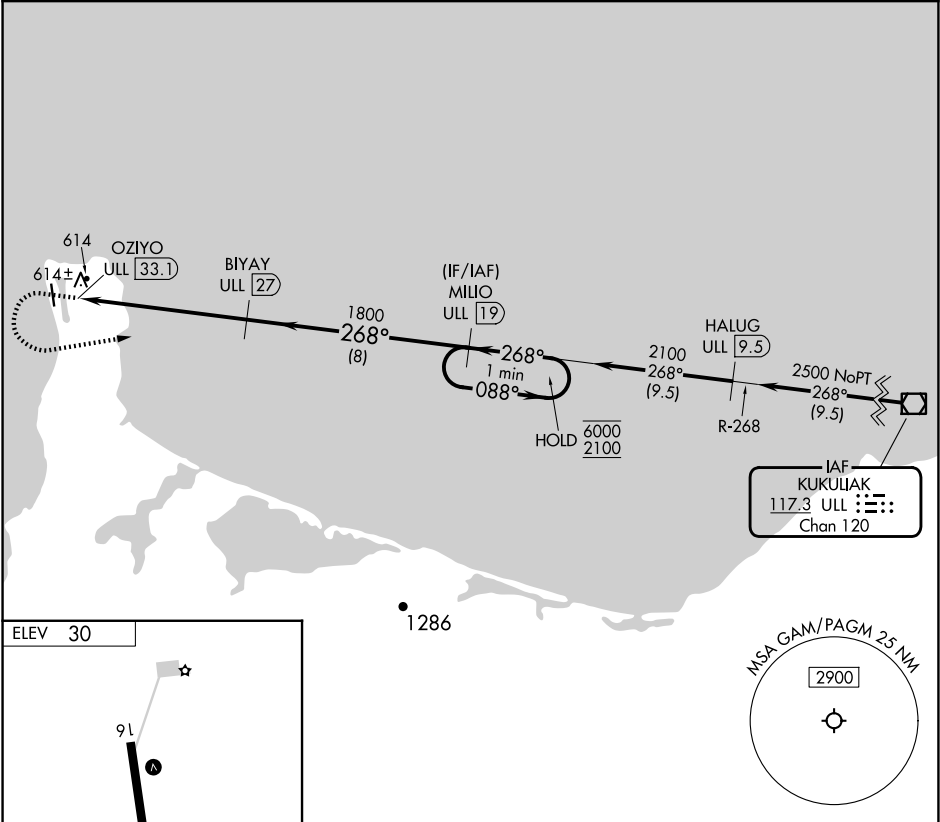


VOR/DME ULL <b>117.3</b> Chan <b>120</b>	APP CRS <b>268°</b>	Rwy Idg TDZE Apt Elev <b>N/A</b> <b>N/A</b> <b>30</b>
--	------------------------	--

VOR-A  
GAMBELL (GAM)(PAGM)

DME required. ⚠ -26°C	MISSED APPROACH: Climb to 1200 then climbing left turn to 2100 heading 071° and on ULL VOR/DME R-268 to MILIO/ULL 19 DME and hold.
-----------------------------	--

AWOS-3P <b>125.9</b>	ANCHORAGE CENTER <b>132.2 281.4</b>	NOME RADIO <b>122.0</b>	CTAF <b>122.7 0</b>
-------------------------	--	----------------------------	------------------------



1200	2100	ULL R-268	MILIO ULL 19	MILIO ULL 19	One Minute Holding Pattern
hdg 071°					
OZIYO ULL 33.1	BIYAY ULL 27	1800	268°	088°	6000 2100
	6.1 NM	8 NM			
CATEGORY	A	B	C	D	
CIRCLING	1000-1¼ 970 (1000-1¼)	1000-1½ 970 (1000-1½)	1000-3	970 (1000-3)	

AK, 12 JUN 2025 to 07 AUG 2025

AK, 12 JUN 2025 to 07 AUG 2025