


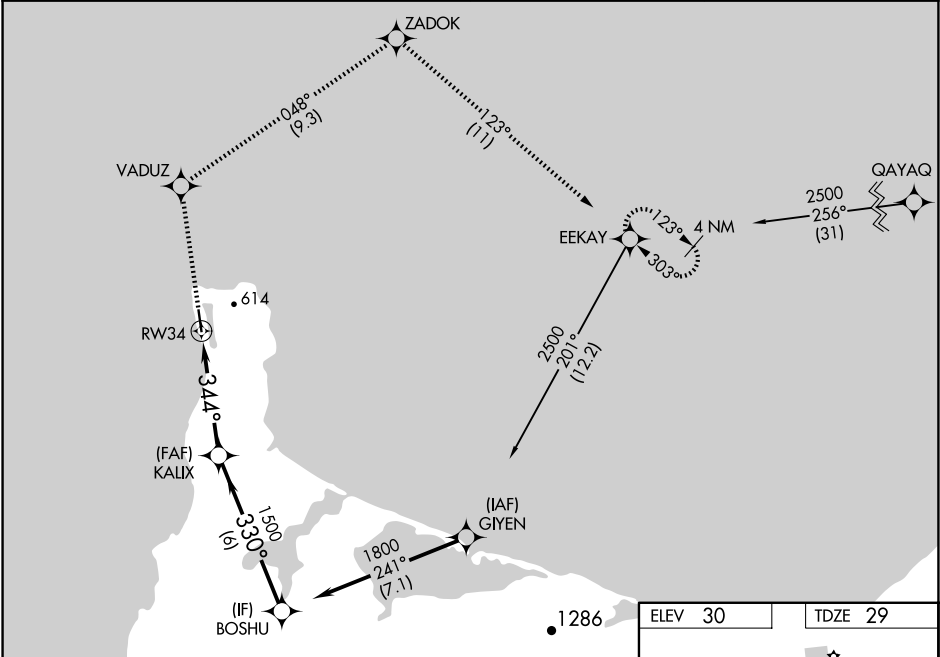
WAAS CH 82135 W34A	APP CRS 344°	Rwy Idg TDZE 4500 29 Apt Elev 30
--	------------------------	---





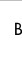
RNAV (GPS) RWY 34

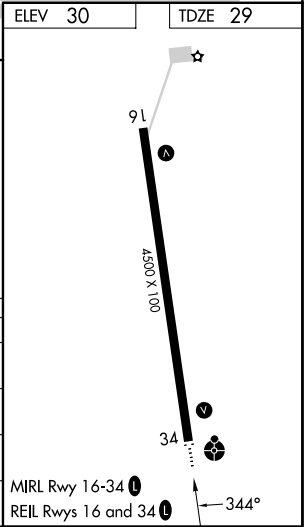
GAMBELL (GAM) (PAGM)

RNP APCH - GPS.	ODALS 	MISSED APPROACH: Climb to 2500 direct VADUZ then right turn on track 048° to ZADOK and on track 123° to EEKAY and hold.
Circling NA east of Rwy 16-34. For uncompensated Baro-VNAV systems, LNAV/VNAV NA below -20°C or above 54°C. For inop ALS, increase LNAV/VNAV Cat A and B visibility to 1 1/4 SM. Inop table does not apply to LPV all Cats and LNAV Cats A and B visibilities.		

AWOS-3P 125.9	ANCHORAGE CENTER 132.2 281.4	NOME RADIO 122.0	CTAF 122.7 0
-------------------------	--	----------------------------	------------------------



2500	VADUZ	ZADOK	EEKAY	BOSHU
				
	tr 048°	tr 123°		
		KALIX 1500		1800
	1.7 NM to RW34	344°	330°	GP 3.00°
			1500	TCH 39
	1.7 NM	2.8 NM	6 NM	
CATEGORY	A	B	C	D
LPV DA	229-1 200 (200-1)			
LNAV/VNAV DA	459-1 1/8 430 (500-1 1/8)			
LNAV MDA	600-1 571 (600-1)		600-1 1/2 571 (600-1 1/2)	
CIRCLING	600-1 570 (600-1)		600-2 630 (700-2)	



AK, 12 JUN 2025 to 07 AUG 2025

AK, 12 JUN 2025 to 07 AUG 2025