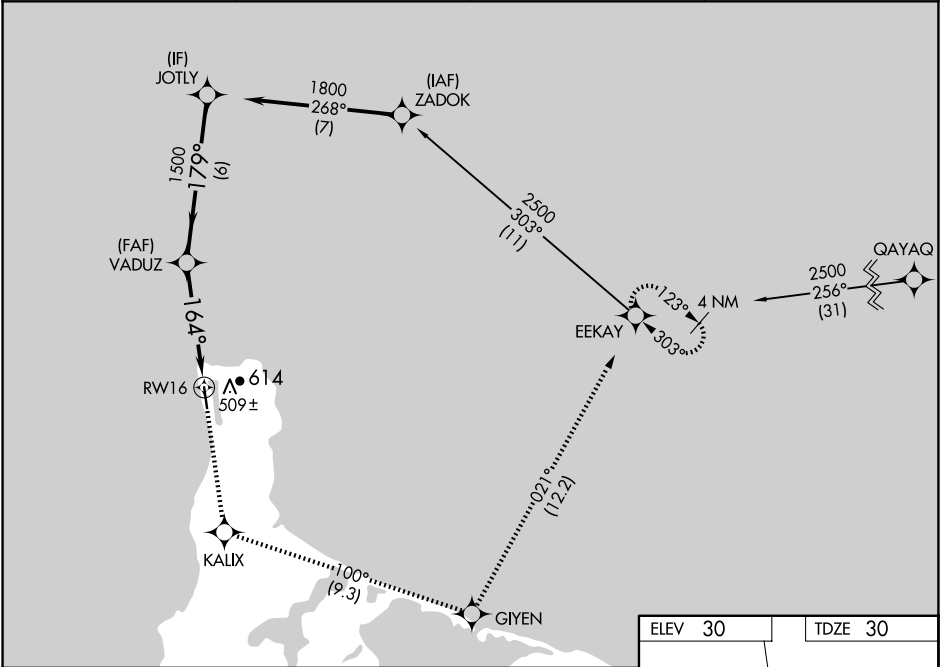


WAAS CH 86635 W16A	APP CRS 164°	Rwy ldg TDZE Apt Elev 4500 30 30
--	------------------------	--

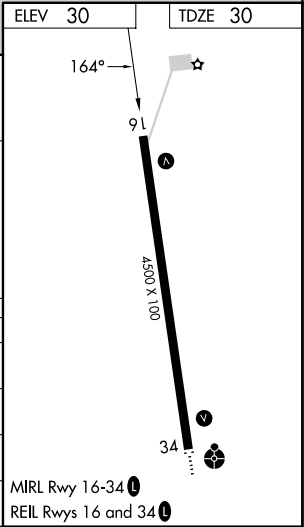
RNAV (GPS) RWY 16
GAMBELL (GAM) (PAGM)

RNP APCH - GPS.	MISSED APPROACH: Climb to 2500 direct KALIX then left turn on track 100° to GIYEN and on track 021° to EEKAY and hold.
<div><div>▼</div><div>▲</div><div>⊞</div></div> <div>Circling NA east of Rwy 16-34. For uncompensated Baro-VNAV systems, LNAV/VNAV NA below -20°C or above 54°C .</div> <div>-26°C</div>	

AWOS-3P 125.9	ANCHORAGE CENTER 132.2 281.4	NOME RADIO 122.0	CTAF 122.7
-------------------------	--	----------------------------	----------------------



JOTLY		2500	KALIX	GIYEN	tr 021°	EEKAY
1800						
GP 3.00°						
TCH 37						
6 NM		3.1 NM		1.4 NM		
CATEGORY	A	B	C	D		
LPV DA	230-1		200 (200-1)			
LNAV/VNAV DA	523-1 3/8		493 (500-1 3/8)			
LNAV MDA	520-1 490 (500-1)		520-1 3/8 490 (500-1 3/8)			
CIRCLING	520-1 490 (500-1)		520-1 1/2 490 (500-1 1/2)		660-2 630 (700-2)	



AK, 12 JUN 2025 to 07 AUG 2025

AK, 12 JUN 2025 to 07 AUG 2025