

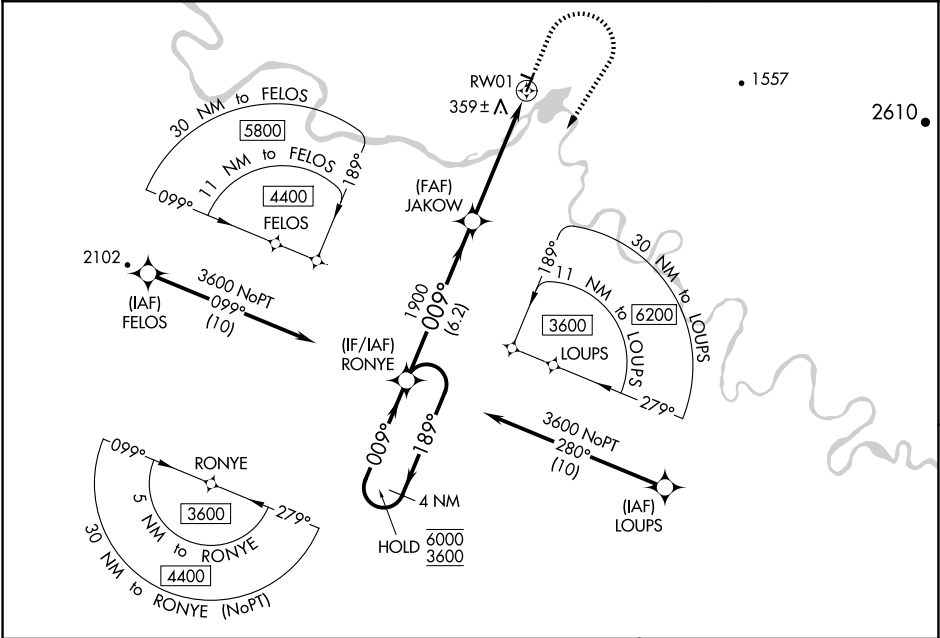
WAAS CH 40439 W01A	APP CRS 009°	Rwy Idg TDZE 268 Apt Elev 293
--	------------------------	---

RNAV (GPS) RWY 1

AMBLER (AFM) (PAFM)

RNP APCH.	MISSED APPROACH: Climb to 1000 then climbing right turn to 3600 direct RONYE and hold, continue climb-in-hold to 3600. # Missed approach requires minimum climb of 210 feet per NM to 2300.
<div><div><div>⚠</div><div>-36°C</div></div><div>Circling NA west of Rwy 1-19. For uncompensated Baro-VNAV systems, LNAV/VNAV NA below -20°C or above 42°C.</div></div>	

AWOS-3P 132.1	ANCHORAGE CENTER 119.2 263.0	KOTZEBUE RADIO 122.0	CTAF 122.7 0
-------------------------	--	--------------------------------	------------------------



VGSI and RNAV glidepath not coincident (VGSI Angle 3.00/TCH 25).					ELEV 293	TDZE 268	
<div>4 NM Holding Pattern</div> <div>RONYE</div> <div>JAKOW</div> <div>1900</div> <div>1900</div> <div>6.2 NM</div> <div>2.8 NM</div> <div>2.3 NM</div> <div>RW01</div> <div>1000</div> <div>3600</div> <div>RONY</div> <div>189°</div> <div>009°</div> <div>009°</div> <div>2.3 NM to RW01</div> <div>*LNAV only.</div> <div>GP 3.00°</div> <div>TCH 40</div>					<div>MIRL Rwy 1-19 and 10-28</div> <div>01</div> <div>28</div> <div>2400 X 60</div> <div>1.1° UP</div> <div>4000 X 75</div> <div>0.3° UP</div> <div>009°</div>		
CATEGORY	A	B	C	D			
LPV DA#	518-1 250 (300-1)						
LPV DA	686-1⅓ 418 (400-1⅓)						
LNAV/VNAV DA	811-1⅞ 543 (600-1⅞)						
LNAV MDA	1000-1 732 (800-1)	1000-1¼ 732 (800-1¼)	1000-1⅞ 732 (800-1⅞)				
CIRCLING	1000-1 707 (800-1)	1000-1¼ 707 (800-1¼)	1000-2 707 (800-2)	1000-2¼ 707 (800-2¼)			