

WAAS CH <b>99347</b> <b>W21A</b>	APP CRS <b>210°</b>	Rwy Idg <b>4000</b> TDZE <b>21</b> Apt Elev <b>21</b>
--	------------------------	---

RNAV (GPS) RWY 21

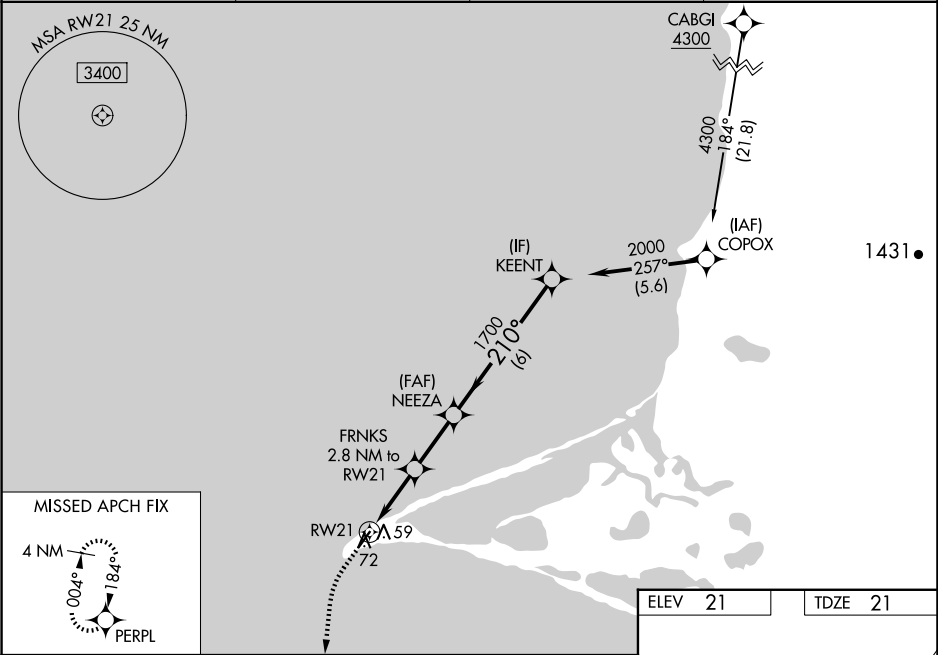
POINT HOPE (PHO) (PAPO)

RNP APCH - GPS.

For uncompensated Baro-VNAV systems, LNAV/VNAV NA below -20°C or above 54°C. Rwy 21 helicopter visibility reduction below ¾ SM NA. Baro-VNAV and VDP NA when using LUR/PALU altimeter setting. When local altimeter setting not received, use LUR/PALU altimeter setting and increase LPV DA to 303 feet; increase LNAV/VNAV DA to 353 feet; increase all MDAs 100 feet and LNAV visibility Cat C/D ½ SM.

MISSED APPROACH: Climb to 700 then climbing left turn to 3000 direct PERPL and hold, continue climb-in-hold to 3000.

AWOS-3P <b>118.325</b>	ANCHORAGE CENTER <b>119.65 363.25</b>	KOTZEBUE RADIO <b>122.25</b>	CTAF <b>122.8 0</b>
---------------------------	--	---------------------------------	------------------------



700		3000	PERPL	VGSI and RNAV glidepath not coincident (VGSI Angle 3.00/TCH 25).		KEENT
						2000
RW21		FRNKs 2.8 NM to RW21	NEEZA	GP 3.00° TCH 40		
0.9		1.9 NM	2.4 NM	6 NM		
CATEGORY	A	B	C	D		
LPV DA	221-1		200 (200-1)			
LNAV/VNAV DA	271-1		250 (300-1)			
LNAV MDA	320-1		299 (300-1)			
CIRCLING	380-1 359 (400-1)	480-1 459 (500-1)	480-1½ 459 (500-1½)	580-2 559 (600-2)		

