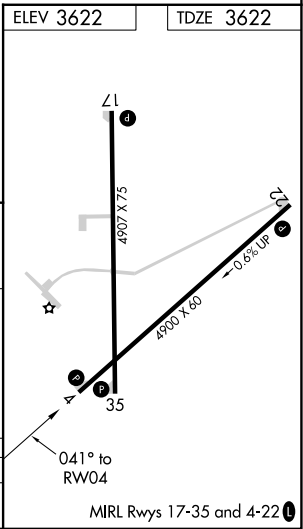
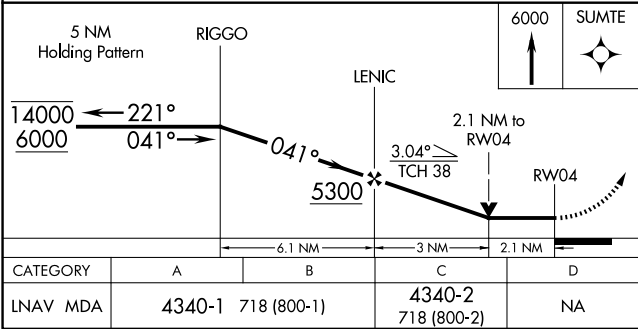
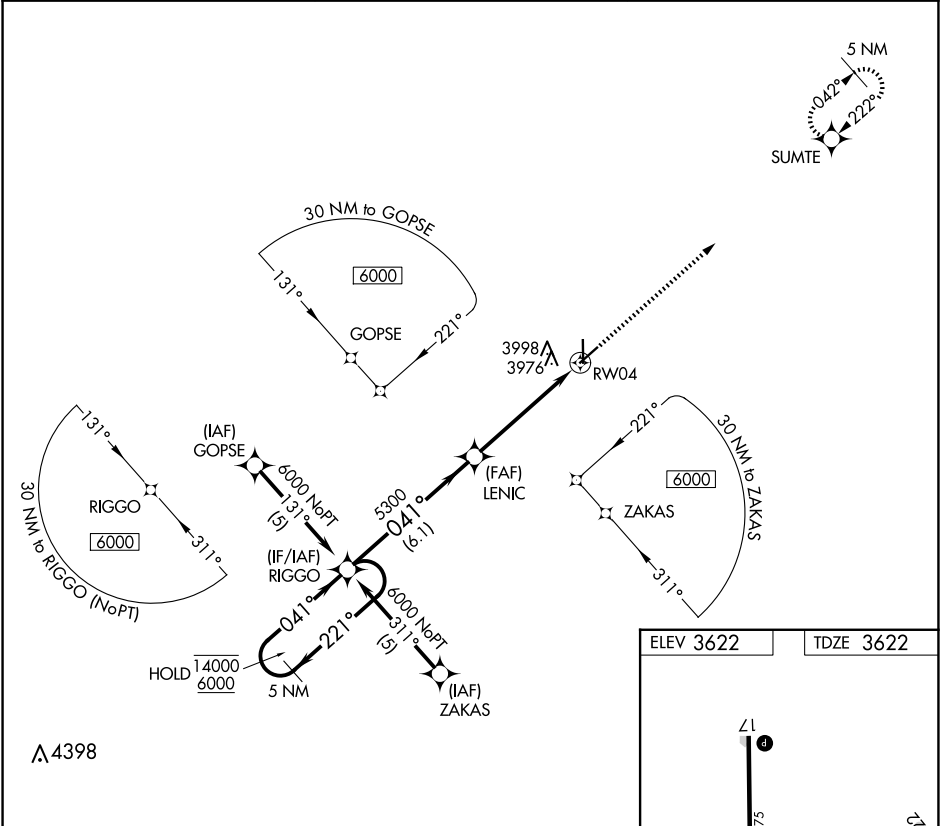


APP CRS	Rwy Idg	4900
041°	TDZE	3622
	Apt Elev	3622

RNAV (GPS) RWY 4
ELKHART-MORTON COUNTY (EHA)

RNP APCH-GPS.	MISSED APPROACH: Climb to 6000 direct SUMTE and hold.
<div><div></div><div></div></div> Rwy 4 helicopter visibility reduction below ¾ SM NA.	

AWOS-3P 118.025	KANSAS CITY CENTER 134.0 257.625	UNICOM 122.8 (CTAF) 0
--------------------	-------------------------------------	--------------------------



NC-2, 10 JUL 2025 to 07 AUG 2025

NC-2, 10 JUL 2025 to 07 AUG 2025