

APP CRS <b>311°</b>	Rwy Idg <b>4210</b> TDZE <b>1318</b> Apt Elev <b>1318</b>
------------------------	---

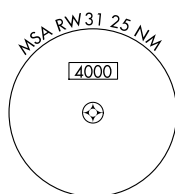
RNAV (GPS) RWY 31  
BRITTON MUNI (BTN)

RNP APCH-GPS.

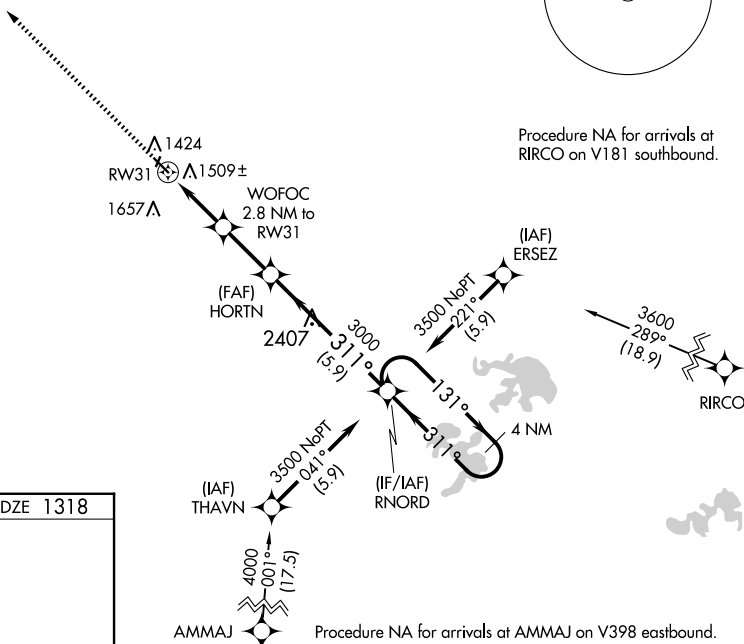
**T** When local altimeter setting not received, use Aberdeen altimeter setting and increase all MDAs 100 feet. Circling NA to Rwy 1 and 19. Rwy 13 helicopter visibility reduction below  $\frac{3}{4}$  SM NA.

**MISSED APPROACH:** Climb to 3000 direct  
MAII and hold.

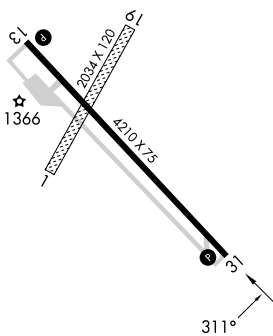

AWOS-3P <b>118.275</b>	ABR ASOS <b>125.875</b>	MINNEAPOLIS CENTER <b>120.6 371.9</b>	GCO <b>121.725</b>	AUNICOM <b>122.8 (CTAF) 0</b>
---------------------------	----------------------------	--	-----------------------	----------------------------------



Procedure NA for arrivals at RIRCO on V181 southbound.



ELEV 1318		TDZE 1318
-----------	--	-----------

REF Rwy 13 and 31 MIRL Rwy 13-31 