

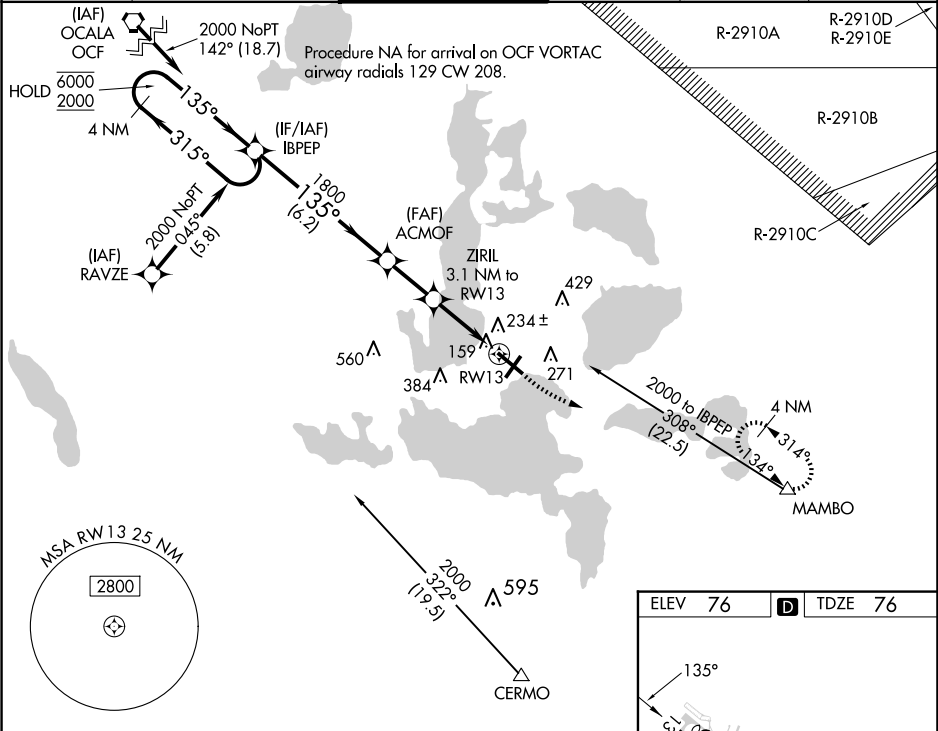
APP CRS	Rwy Idg	5211
135°	TDZE	76
	Apt Elev	76

RNAV (GPS) RWY 13

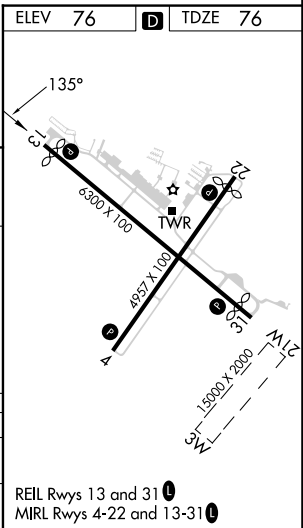
LEESBURG INTL (L/E)

RNP APCH - GPS.		MISSED APPROACH: Climb to 600 then climbing left turn to 2000 direct MAMBO and hold.
⚠ Circling NA to Rwy 3W and 21W. Rwy 13 helicopter visibility reduction below ¾ SM NA. ⚠ VDP NA when using Orlando Intl altimeter setting. When local altimeter setting not received, use Orlando Intl altimeter setting and increase all MDAs 100 feet and LNAV visibility Cat C/D ¼ SM, and Circling visibility Cat C/D ¼ SM. Circling Rwy 4, 22 NA at night.		

ATIS 134.325	ORLANDO APP CON 135.3 351.9	LEESBURG TOWER ★ 119.35 (CTAF) 0	GND CON 121.725	CLNC DEL 120.225 (When twr closed)	UNICOM 122.725
-----------------	--------------------------------	-------------------------------------	--------------------	--	-------------------



4 NM Holding Pattern		VGSI and descent angles not coincident (VGSI Angle 3.00/TCH 40).		600	2000	MAMBO
IBPEP		ACMOF		ZIRIL 3.1 NM to RWY13		
6000 ← 315°		1800		1.2 NM to RWY13		
2000 → 135°		1100		3.00° TCH 55		
		6.2 NM		2.2 NM		
				1.9 NM		
				1.2		
CATEGORY	A	B	C	D		
LNAV MDA	500-1	424 (500-1)	500-1¼	424 (500-1¼)		
CIRCLING	700-1	624 (700-1)	780-2 704 (800-2)	780-2¼ 704 (800-2¼)		



SE-3, 10 JUL 2025 to 07 AUG 2025

SE-3, 10 JUL 2025 to 07 AUG 2025