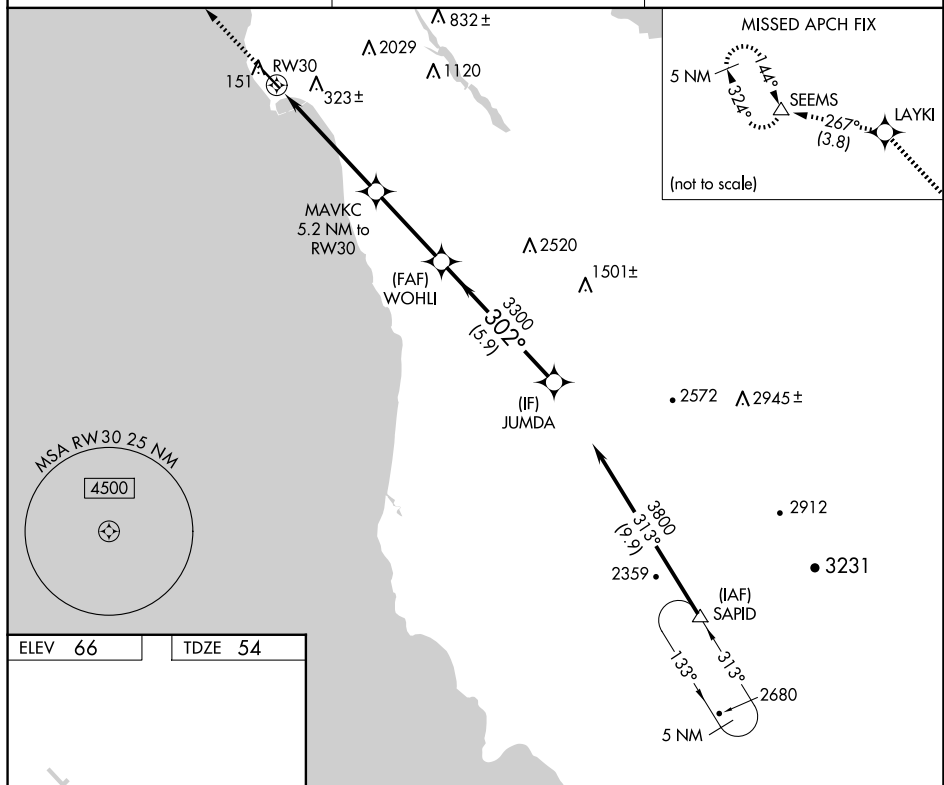


23110

RNAV (GPS) RWY 30

MISSED APPROACH: Climb to 4000 direct LAYKI and on track 267° to SEEMS and hold, continue climb-in-hold to 4000.

UNICOM
122.8 (CTAF) **L**

4000	LAYKI	SEEMS	VGSJ and RNAV glidepath not coincident (VGSJ Angle 3.00/TCH 24).
↑	✱	△	
tr 267°			

*LNAV only

MAVCK 5.2 NM to RW30

3300

302°

3800

3300

GP 3.50° TCH 40'

1.8 NM

3.4 NM

3.4 NM

5.9 NM

2020*

REIL Rwy 30

MIRL Rwy 12-30

HALF MOON BAY (HAF)
RNAV (GPS) RWY 30

SW-2, 10 JUL 2025 to 07 AUG 2025