

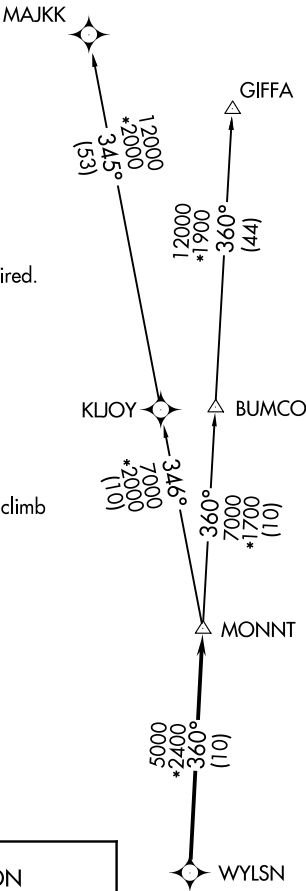
CTAF
122.7
HOUSTON DEP CON
134.45 284.0

TOP ALTITUDE:
ASSIGNED BY ATC

NOTE: RADAR required.
NOTE: DME/DME/IRU or GPS required.
NOTE: RNAV 1.

TAKEOFF MINIMUMS

Rwy 8, 26: Standard with minimum climb
of 500' per NM to 540.
Rwy 14, 32: NA - Environmental.



DEPARTURE ROUTE DESCRIPTION

TAKEOFF RUNWAY 8: Climb on heading 084° to 540 for RADAR vectors to WYLSN, thence. . . .

TAKEOFF RUNWAY 26: Climb on heading 264° to 540 for RADAR vectors to WYLSN, thence. . . .

. . . .on track 360° to MONNT, then on (transition). Maintain ATC assigned altitude. Expect filed altitude 10 minutes after departure.

GIFFA TRANSITION (WYLSN8.GIFFA)
MAJJK TRANSITION (WYLSN8.MAJKK)

NOTE: Chart not to scale.

SC-5, 10 JUL 2025 to 07 AUG 2025

SC-5, 10 JUL 2025 to 07 AUG 2025